

## Product datasheet for **TA343478**

### POU4F2 Rabbit Polyclonal Antibody

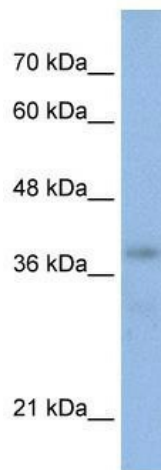
#### Product data:

Product Type:	Primary Antibodies
Applications:	WB
Recommended Dilution:	WB
Reactivity:	Human
Host:	Rabbit
Isotype:	IgG
Clonality:	Polyclonal
Immunogen:	The immunogen for anti-POU4F2 antibody: synthetic peptide directed towards the N terminal of human POU4F2. Synthetic peptide located within the following region: MMMMSLNSKQAFSMPHGGSLHVEPKYSALHSTSPGSSAPIAPSASSPSSS
Formulation:	Liquid. Purified antibody supplied in 1x PBS buffer with 0.09% (w/v) sodium azide and 2% sucrose. <i>Note that this product is shipped as lyophilized powder to China customers.</i>
Purification:	Affinity Purified
Conjugation:	Unconjugated
Storage:	Store at -20°C as received.
Stability:	Stable for 12 months from date of receipt.
Predicted Protein Size:	43 kDa
Gene Name:	POU class 4 homeobox 2
Database Link:	<a href="#">NP_004566</a> <a href="#">Entrez Gene 5458 Human</a> <a href="#">Q12837</a>



[View online »](#)

<b>Background:</b>	POU4F2 is a member of the POU-domain family of transcription factors. POU-domain proteins have been observed to play important roles in control of cell identity in several systems. A class IV POU-domain protein, POU4F2 is found in human retina exclusively within a subpopulation of ganglion cells where it may play a role in determining or maintaining the identities of a small subset of visual system neurons. POU4F2 is a member of the POU-domain family of transcription factors. POU-domain proteins have been observed to play important roles in control of cell identity in several systems. A class IV POU-domain protein, POU4F2 is found in human retina exclusively within a subpopulation of ganglion cells where it may play a role in determining or maintaining the identities of a small subset of visual system neurons. [supplied by OMIM]
<b>Synonyms:</b>	Brn-3b; BRN3.2; BRN3B
<b>Note:</b>	Immunogen Sequence Homology: Dog: 100%; Pig: 100%; Horse: 100%; Human: 100%; Bovine: 100%; Guinea pig: 100%; Rat: 93%; Mouse: 93%
<b>Protein Families:</b>	Transcription Factors

**Product images:**

WB Suggested Anti-POU4F2 Antibody Titration: 0.2-1 ug/ml; Positive Control: HepG2 cell lysate