

Product datasheet for **TA343477**

OVOL1 Rabbit Polyclonal Antibody

Product data:

Product Type:	Primary Antibodies
Applications:	IHC, WB
Recommended Dilution:	WB, IHC
Reactivity:	Human
Host:	Rabbit
Isotype:	IgG
Clonality:	Polyclonal
Immunogen:	The immunogen for anti-OVOL1 antibody: synthetic peptide directed towards the C terminal of human OVOL1. Synthetic peptide located within the following region: QKYAYKERRAKLYVCEECSQEGHVLHLKEHHPDSPLLRKTSKKVA
Formulation:	Liquid. Purified antibody supplied in 1x PBS buffer with 0.09% (w/v) sodium azide and 2% sucrose.
Purification:	Affinity Purified
Conjugation:	Unconjugated
Storage:	Store at -20°C as received.
Stability:	Stable for 12 months from date of receipt.
Predicted Protein Size:	30 kDa
Gene Name:	ovo like transcriptional repressor 1
Database Link:	NP_004552 Entrez Gene 5017 Human O14753

Background: OVOL1 is a protein highly similar to Drosophila and mouse proteins. In Drosophila the ovo protein plays a critical role in Drosophila oogenesis and cuticle formation. In mice the ovo like protein is involved in hair formation and spermatogenesis. The function of the human gene product has not been determined. This gene encodes a protein highly similar to Drosophila and mouse proteins. In Drosophila the ovo protein plays a critical role in Drosophila oogenesis and cuticle formation. In mice the ovo like protein is involved in hair formation and spermatogenesis. The function of the human gene product has not been determined.



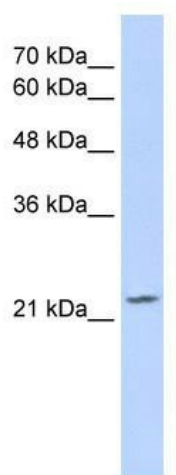
[View online »](#)

Synonyms: HOVO1

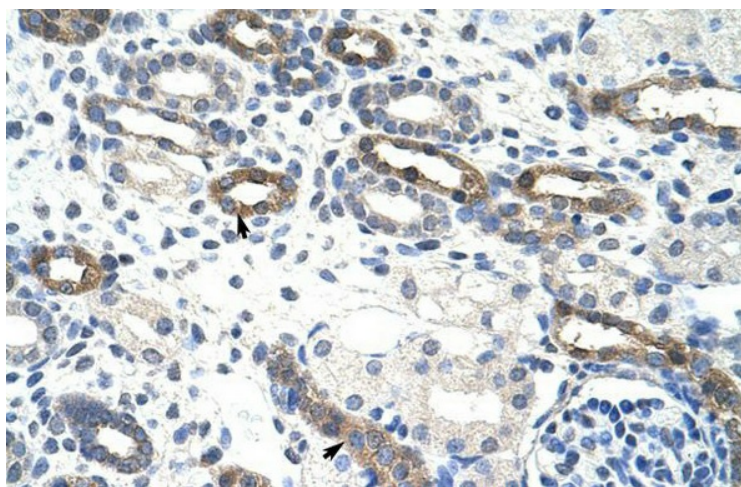
Note: Immunogen Sequence Homology: Dog: 100%; Pig: 100%; Rat: 100%; Goat: 100%; Horse: 100%; Human: 100%; Bovine: 100%; Guinea pig: 100%; Mouse: 93%; Rabbit: 93%

Protein Families: Druggable Genome, Transcription Factors

Product images:



WB Suggested Anti-OVOL1 Antibody Titration: 2.0 ug/ml; Positive Control: Jurkat cell lysate



Human kidney