

Product datasheet for **TA343476**

NOTCH4 Rabbit Polyclonal Antibody

Product data:

Product Type:	Primary Antibodies
Applications:	WB
Recommended Dilution:	WB
Reactivity:	Human
Host:	Rabbit
Isotype:	IgG
Clonality:	Polyclonal
Immunogen:	The immunogen for anti-NOTCH4 antibody: synthetic peptide directed towards the C terminal of human NOTCH4. Synthetic peptide located within the following region: CDWVALGACGSASNIPIPPCLTPSPERGSPQLDCGPPALQEMPINQGGE
Formulation:	Liquid. Purified antibody supplied in 1x PBS buffer with 0.09% (w/v) sodium azide and 2% sucrose. <i>Note that this product is shipped as lyophilized powder to China customers.</i>
Purification:	Affinity Purified
Conjugation:	Unconjugated
Storage:	Store at -20°C as received.
Stability:	Stable for 12 months from date of receipt.
Predicted Protein Size:	58 kDa
Gene Name:	notch 4
Database Link:	NP_004548 Entrez Gene 4855 Human Q99466



[View online »](#)

Background:

NOTCH4 is a member of the Notch family. Members of this Type 1 transmembrane protein family share structural characteristics including an extracellular domain consisting of multiple epidermal growth factor-like (EGF) repeats, and an intracellular domain consisting of multiple, different domain types. Notch family members play a role in a variety of developmental processes by controlling cell fate decisions. The Notch signaling network is an evolutionarily conserved intercellular signaling pathway which regulates interactions between physically adjacent cells. NOTCH4 is cleaved in the trans-Golgi network, and presented on the cell surface as a heterodimer. NOTCH4 functions as a receptor for membrane bound ligands, and may play a role in vascular, renal and hepatic development. NOTCH4 gene may be associated with susceptibility to schizophrenia in a small portion of cases.

Synonyms:

INT3

Note:

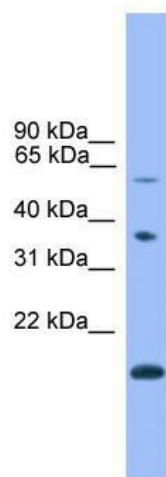
Immunogen Sequence Homology: Rat: 100%; Horse: 100%; Human: 100%; Mouse: 100%; Bovine: 100%; Pig: 92%; Guinea pig: 92%

Protein Families:

Druggable Genome

Protein Pathways:

Dorso-ventral axis formation, Notch signaling pathway

Product images:

WB Suggested Anti-NOTCH4 Antibody Titration:
0.2-1 ug/ml; ELISA Titer: 1: 62500; Positive
Control: Jurkat cell lysate