

Product datasheet for **TA343475**

IKB epsilon (NFKBIE) Rabbit Polyclonal Antibody

Product data:

Product Type:	Primary Antibodies
Applications:	WB
Recommended Dilution:	WB
Reactivity:	Human, Mouse
Host:	Rabbit
Isotype:	IgG
Clonality:	Polyclonal
Immunogen:	The immunogen for anti-NFKBIE antibody: synthetic peptide directed towards the middle region of human NFKBIE. Synthetic peptide located within the following region: DARMLNGCTPLHLAAGRGLMGISSTLCKAGADSLLRNVEDETPQDLTEES
Formulation:	Liquid. Purified antibody supplied in 1x PBS buffer with 0.09% (w/v) sodium azide and 2% sucrose. <i>Note that this product is shipped as lyophilized powder to China customers.</i>
Purification:	Affinity Purified
Conjugation:	Unconjugated
Storage:	Store at -20°C as received.
Stability:	Stable for 12 months from date of receipt.
Predicted Protein Size:	53 kDa
Gene Name:	NFKB inhibitor epsilon
Database Link:	NP_004547 Entrez Gene 18037 Mouse Entrez Gene 4794 Human O00221
Background:	NFKB1 (MIM 164011) or NFKB2 (MIM 164012) is bound to REL (MIM 164910), RELA (MIM 164014), or RELB (MIM 604758) to form the NFKB complex. The NFKB complex is inhibited by I-kappa-B proteins (NFKBIA, MIM 164008 or NFKBIB, MIM 604495), which inactivate NF- κ B
Synonyms:	IKBE
Note:	Immunogen Sequence Homology: Human: 100%; Pig: 93%; Horse: 93%; Bovine: 93%; Rabbit: 93%; Rat: 92%; Mouse: 92%; Guinea pig: 92%

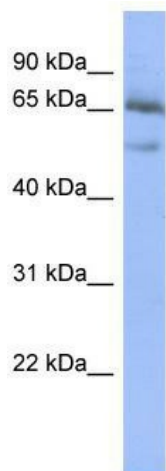


[View online »](#)

Protein Families: Druggable Genome, Transcription Factors

Protein Pathways: Adipocytokine signaling pathway, B cell receptor signaling pathway, Neurotrophin signaling pathway, T cell receptor signaling pathway

Product images:



WB Suggested Anti-NFKBIE Antibody Titration:
0.2-1 ug/ml; ELISA Titer: 1: 62500; Positive
Control: HT1080 cell lysate