

Product datasheet for **TA343467**

HNF6 (ONECUT1) Rabbit Polyclonal Antibody

Product data:

Product Type:	Primary Antibodies
Applications:	IHC, WB
Recommended Dilution:	WB, IHC
Reactivity:	Human
Host:	Rabbit
Isotype:	IgG
Clonality:	Polyclonal
Immunogen:	The immunogen for anti-ONECUT1 antibody: synthetic peptide directed towards the middle region of human ONECUT1. Synthetic peptide located within the following region: ITISQQLGLELSTVSNFFMNARRRSLDKWQDEGSSNSGNSSSSSSTCTKA
Formulation:	Liquid. Purified antibody supplied in 1x PBS buffer with 0.09% (w/v) sodium azide and 2% sucrose. <i>Note that this product is shipped as lyophilized powder to China customers.</i>
Purification:	Affinity Purified
Conjugation:	Unconjugated
Storage:	Store at -20°C as received.
Stability:	Stable for 12 months from date of receipt.
Predicted Protein Size:	51 kDa
Gene Name:	one cut homeobox 1
Database Link:	NP_004489 Entrez Gene 3175 Human Q9UBC0
Background:	ONECUT1 belongs to the CUT homeobox family. It contains 1 CUT DNA-binding domain and 1 homeobox DNA-binding domain. It is a transcriptional activator. ONECUT1 binds the consensus sequence 5'-DHWATTGAYTWW-3' on a variety of gene promoters such as those of HNF3B and TTR. It is important for liver genes transcription.
Synonyms:	HNF-6; HNF6; HNF6A



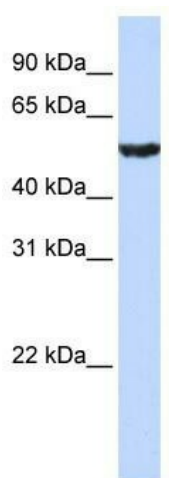
[View online »](#)

Note: Immunogen Sequence Homology: Dog: 100%; Pig: 100%; Rat: 100%; Horse: 100%; Human: 100%; Rabbit: 100%; Bovine: 93%; Mouse: 86%; Zebrafish: 79%

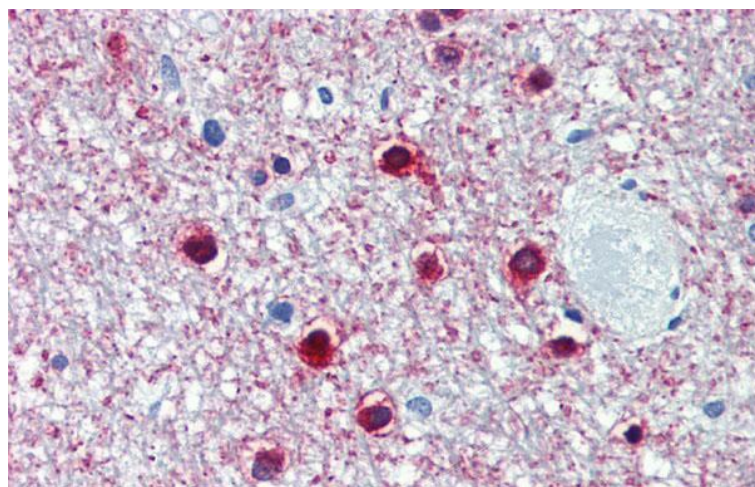
Protein Families: ES Cell Differentiation/IPS, Transcription Factors

Protein Pathways: Maturity onset diabetes of the young

Product images:



WB Suggested Anti-ONECUT1 Antibody Titration:
0.2-1 ug/ml; ELISA Titer: 1: 312500; Positive
Control: Jurkat cell lysate



Immunohistochemistry with Human Brain, cerebellum tissue at an antibody concentration of 5.0 ug/ml using anti-ONECUT1 antibody