

Product datasheet for **TA343464**

FGD1 Rabbit Polyclonal Antibody

Product data:

Product Type:	Primary Antibodies
Applications:	WB
Recommended Dilution:	WB
Reactivity:	Human
Host:	Rabbit
Isotype:	IgG
Clonality:	Polyclonal
Immunogen:	The immunogen for anti-FGD1 antibody: synthetic peptide directed towards the N terminal of human FGD1. Synthetic peptide located within the following region: HGHRAPGGAGPSEPEHPATNPPGAAPPACADSDPGASEPGLLARRGSGSA
Formulation:	Liquid. Purified antibody supplied in 1x PBS buffer with 0.09% (w/v) sodium azide and 2% sucrose. <i>Note that this product is shipped as lyophilized powder to China customers.</i>
Purification:	Affinity Purified
Conjugation:	Unconjugated
Storage:	Store at -20°C as received.
Stability:	Stable for 12 months from date of receipt.
Predicted Protein Size:	106 kDa
Gene Name:	FYVE, RhoGEF and PH domain containing 1
Database Link:	NP_004454 Entrez Gene 2245 Human P98174



[View online »](#)

Background:

FGD1 contains Dbl (DH) and pleckstrin (PH) homology domains. It can bind specifically to the Rho family GTPase Cdc42Hs and stimulate the GDP-GTP exchange of the isoprenylated form of Cdc42Hs. It also stimulates the mitogen activated protein kinase cascade leading to c-Jun kinase SAPK/JNK1 activation. FGD1 has an essential role in embryonic development, and FGD1 gene mutations result in the human developmental disorder, Aarskog-Scott syndrome. FGD1 contains Dbl (DH) and pleckstrin (PH) homology domains. It can bind specifically to the Rho family GTPase Cdc42Hs and stimulate the GDP-GTP exchange of the isoprenylated form of Cdc42Hs. It also stimulates the mitogen activated protein kinase cascade leading to c-Jun kinase SAPK/JNK1 activation. FGD1 has an essential role in embryonic development, and FGD1 gene mutations result in the human developmental disorder, Aarskog-Scott syndrome. Publication Note: This RefSeq record includes a subset of the publications that are available for this gene. Please see the Entrez Gene record to access additional publications.

Synonyms:

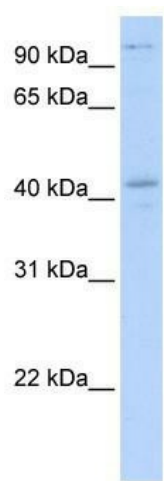
AAS; FGDY; MRXS16; ZFYVE3

Note:

Immunogen Sequence Homology: Human: 100%; Pig: 86%; Bovine: 86%; Rat: 79%

Protein Pathways:

Regulation of actin cytoskeleton

Product images:

WB Suggested Anti-FGD1 Antibody Titration: 0.2-1 ug/ml; ELISA Titer: 1: 312500; Positive Control: Transfected 293T