

Product datasheet for **TA343462**

ETV5 Rabbit Polyclonal Antibody

Product data:

Product Type:	Primary Antibodies
Applications:	WB
Recommended Dilution:	WB
Reactivity:	Human
Host:	Rabbit
Isotype:	IgG
Clonality:	Polyclonal
Immunogen:	The immunogen for anti-ETV5 antibody: synthetic peptide directed towards the N terminal of human ETV5. Synthetic peptide located within the following region: PFMVPGKSRSEECRGRPVDRKRKFLDLDLAHDSEELFQDLSQLQEAWLA
Formulation:	Liquid. Purified antibody supplied in 1x PBS buffer with 0.09% (w/v) sodium azide and 2% sucrose. <i>Note that this product is shipped as lyophilized powder to China customers.</i>
Purification:	Affinity Purified
Conjugation:	Unconjugated
Storage:	Store at -20°C as received.
Stability:	Stable for 12 months from date of receipt.
Predicted Protein Size:	58 kDa
Gene Name:	ETS variant 5
Database Link:	NP_004445 Entrez Gene 2119 Human P41161



[View online »](#)

Background:

ETV5 Contains 1 ETS DNA-binding domain and belongs to the ETS family. The ETV5 gene expression is regulated by the conventional PKC (cPKC) pathway. ETV5 is subject to SUMO modification and this post-translational modification causes inhibition of transcription-enhancing activity. Phosphorylated ETV5 and the actin cytoskeleton regulate CD44-mediated hyaluronan binding in myeloid cells. ERMs (ezrin/radixin/moesin) function as adaptor molecules in the interactions of adhesion receptors and intracellular tyrosine kinases. ETV5 can cooperate with c-Jun and has a role in progression of breast cancer.

Synonyms:

ERM

Note:

Immunogen Sequence Homology: Dog: 100%; Pig: 100%; Rat: 100%; Horse: 100%; Human: 100%; Mouse: 100%; Bovine: 100%; Rabbit: 100%; Guinea pig: 100%; Zebrafish: 79%

Protein Families:

Transcription Factors

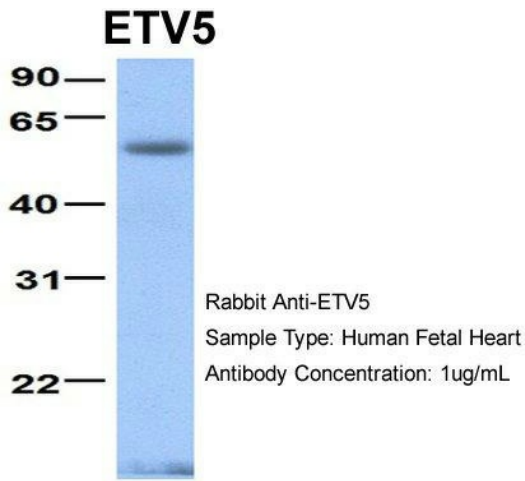
Product images:


WB Suggested Anti-ETV5 Antibody Titration: 0.2-1 ug/ml; Positive Control: Transfected 293T

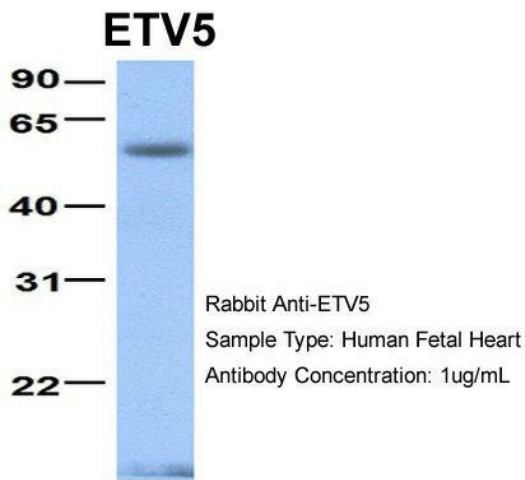
ZBTB48


Rabbit Anti-ZBTB48
Sample Type: Human 293T
Antibody Concentration: 1ug/mL

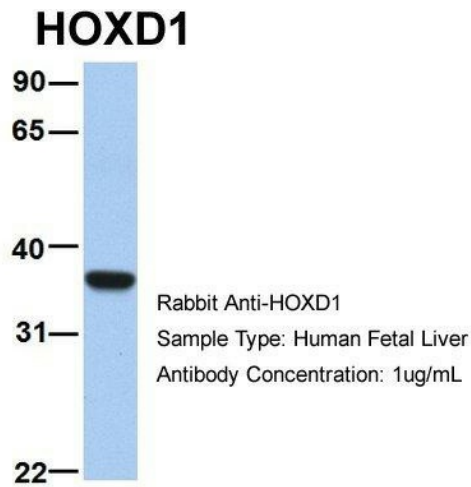
Host: Rabbit; Target Name: ETV5; Sample Tissue: Human Fetal Brain; Antibody Dilution: 1.0 ug/ml



Host: Rabbit; Target Name: ETV5; Sample Tissue: Human Fetal Heart; Antibody Dilution: 1.0 ug/ml



Host: Rabbit; Target Name: ETV5; Sample Tissue: Human Fetal Lung; Antibody Dilution: 1.0 ug/ml



Host: Rabbit; Target Name: HOXD1; Sample Tissue: Human Fetal Liver; Antibody Dilution: 1.0 ug/ml