

Product datasheet for **TA343461**

EGR3 Rabbit Polyclonal Antibody

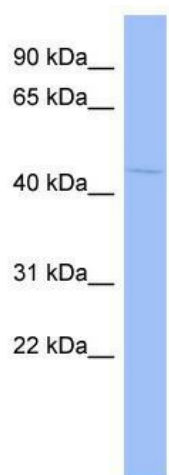
Product data:

Product Type:	Primary Antibodies
Applications:	WB
Recommended Dilution:	WB
Reactivity:	Human
Host:	Rabbit
Isotype:	IgG
Clonality:	Polyclonal
Immunogen:	The immunogen for anti-EGR3 antibody: synthetic peptide directed towards the middle region of human EGR3. Synthetic peptide located within the following region: FCGRKFARSDERKRHAKIHLKQKEKKAEGGAPSASSAPPVSLAPVVTTC
Formulation:	Liquid. Purified antibody supplied in 1x PBS buffer with 0.09% (w/v) sodium azide and 2% sucrose. <i>Note that this product is shipped as lyophilized powder to China customers.</i>
Purification:	Affinity Purified
Conjugation:	Unconjugated
Storage:	Store at -20°C as received.
Stability:	Stable for 12 months from date of receipt.
Predicted Protein Size:	42 kDa
Gene Name:	early growth response 3
Database Link:	NP_004421 Entrez Gene 1960 Human Q06889
Background:	EGR3 is a probable transcription factor involved in muscle spindle development.
Synonyms:	EGR-3; PILOT
Note:	Immunogen Sequence Homology: Dog: 100%; Pig: 100%; Rat: 100%; Horse: 100%; Human: 100%; Bovine: 100%; Rabbit: 100%; Mouse: 93%



[View online »](#)

Product images:



WB Suggested Anti-EGR3 Antibody Titration: 0.2-1 ug/ml; ELISA Titer: 1: 62500; Positive Control: HT1080 cell lysate