

Product datasheet for **TA343459**

Deltex (DTX1) Rabbit Polyclonal Antibody

Product data:

Product Type:	Primary Antibodies
Applications:	WB
Recommended Dilution:	WB
Reactivity:	Human
Host:	Rabbit
Isotype:	IgG
Clonality:	Polyclonal
Immunogen:	The immunogen for anti-DTX1 antibody: synthetic peptide directed towards the N terminal of human DTX1. Synthetic peptide located within the following region: SRWRPYTATVCHHIENVLKEDARGSVVLGQVDAQLVPIIDLQSMHQFRQ
Formulation:	Liquid. Purified antibody supplied in 1x PBS buffer with 0.09% (w/v) sodium azide and 2% sucrose. <i>Note that this product is shipped as lyophilized powder to China customers.</i>
Purification:	Affinity Purified
Conjugation:	Unconjugated
Storage:	Store at -20°C as received.
Stability:	Stable for 12 months from date of receipt.
Predicted Protein Size:	67 kDa
Gene Name:	deltex 1
Database Link:	NP_004407 Entrez Gene 1840 Human Q86Y01
Background:	Studies in Drosophila have identified this gene as encoding a positive regulator of the Notch-signaling pathway. The human gene encodes a protein of unknown function; however, it may play a role in basic helix-loop-helix transcription factor activity.
Synonyms:	hDx-1
Note:	Immunogen Sequence Homology: Pig: 100%; Rat: 100%; Horse: 100%; Human: 100%; Mouse: 100%; Bovine: 100%; Rabbit: 100%

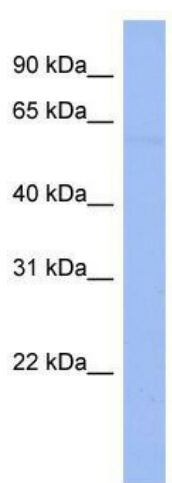


[View online »](#)

Protein Families: Druggable Genome, Transcription Factors

Protein Pathways: Notch signaling pathway

Product images:



WB Suggested Anti-DTX1 Antibody Titration: 0.2-1 ug/ml; ELISA Titer: 1: 62500; Positive Control: THP-1 cell lysate