

Product datasheet for **TA343458**

Calcipressin 1 (RCAN1) Rabbit Polyclonal Antibody

Product data:

Product Type:	Primary Antibodies
Applications:	WB
Recommended Dilution:	WB
Reactivity:	Human, Mouse
Host:	Rabbit
Isotype:	IgG
Clonality:	Polyclonal
Immunogen:	The immunogen for anti-RCAN1 antibody: synthetic peptide directed towards the middle region of human RCAN1. Synthetic peptide located within the following region: PVINYDLLYAISKLGPGKEYELHAATDTTPSVVHVCESDQEKEEEEEME
Formulation:	Liquid. Purified antibody supplied in 1x PBS buffer with 0.09% (w/v) sodium azide and 2% sucrose. <i>Note that this product is shipped as lyophilized powder to China customers.</i>
Purification:	Affinity Purified
Conjugation:	Unconjugated
Storage:	Store at -20°C as received.
Stability:	Stable for 12 months from date of receipt.
Predicted Protein Size:	28 kDa
Gene Name:	regulator of calcineurin 1
Database Link:	NP_004405 Entrez Gene 54720 Mouse Entrez Gene 1827 Human P53805



[View online »](#)

Background:

RCAN1 interacts with calcineurin A and inhibits calcineurin-dependent signaling pathways, possibly affecting central nervous system development. This gene is located in the minimal candidate region for the Down syndrome phenotype, and is overexpressed in the brain of Down syndrome fetuses. Chronic overexpression of this gene may lead to neurofibrillary tangles such as those associated with Alzheimer disease. The protein encoded by this gene interacts with calcineurin A and inhibits calcineurin-dependent signaling pathways, possibly affecting central nervous system development. This gene is located in the minimal candidate region for the Down syndrome phenotype, and is overexpressed in the brain of Down syndrome fetuses. Chronic overexpression of this gene may lead to neurofibrillary tangles such as those associated with Alzheimer disease. Three transcript variants encoding three different isoforms have been found for this gene.

Synonyms:

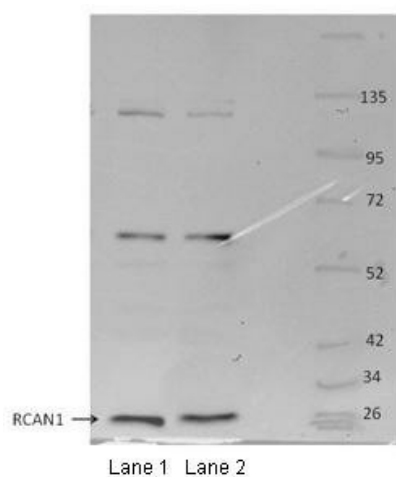
ADAPT78; CSP1; DSC1; DSCR1; MCIP1; RCN1

Note:

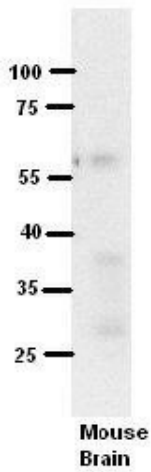
Immunogen Sequence Homology: Dog: 100%; Pig: 100%; Rat: 100%; Horse: 100%; Human: 100%; Mouse: 100%; Sheep: 100%; Bovine: 100%; Guinea pig: 100%; Rabbit: 93%; Zebrafish: 79%

Protein Families:

Transcription Factors

Product images:

RCAN1 antibody - middle region validated by WB using MOUSE OSTEOCLASTS at 1: 1000.



RCAN1

Western Blot
 Mouse Brain
 Dilution: 1 to 500
 5% Milk
 Application data in forum

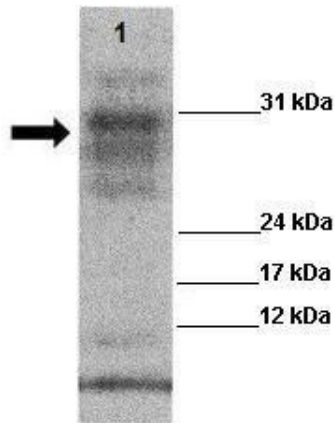
Submitted by:
 Katheleen Gardiner
 University of Colorado Denver

RCAN1 antibody - middle region validated by WB using Mouse Brain at 1: 500.



WB Suggested Anti-RCAN1 Antibody Titration:
 0.2-1 ug/ml; ELISA Titer: 1: 312500; Positive Control: Human Muscle

RCAN1



WB Suggested Anti-RCAN1 Antibody; Positive Control: Lane 1: 20ug Wild type mouse, left ventricle; Primary Antibody Dilution: 1: 1000; Secondary Antibody: Goat anti rabbit-HRP; Secondary Antibody Dilution: 1: 5, 000; Submitted by: Kathleen Gabrielson



Anti-RCAN1 Western Blot & Peptide Block Validation

Lysate: Fetal Muscle

Lane A: Primary Antibody
Lane B: Primary Antibody + Blocking Peptide

Primary Antibody Concentration: 1.0µg/ml
Peptide Concentration: 5.0µg/ml
Lysate Quantity: 25µg/lane
Gel Concentration: 12%

Host: Rabbit; Target Name: RCAN1; Sample Tissue: Human Fetal Muscle; Lane A: Primary Antibody; Lane B: Primary Antibody + Blocking Peptide; Primary Antibody Concentration: 1 ug/ml; Peptide Concentration: 5 ug/ml; Lysate Quantity: 25 ug/lane/lane; Gel Conc