

Product datasheet for **TA343453**

RNF14 Rabbit Polyclonal Antibody

Product data:

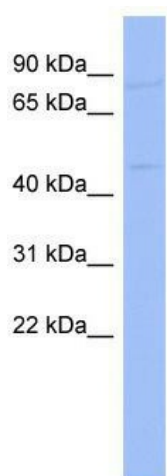
Product Type:	Primary Antibodies
Applications:	WB
Recommended Dilution:	WB
Reactivity:	Human
Host:	Rabbit
Isotype:	IgG
Clonality:	Polyclonal
Immunogen:	The immunogen for anti-RNF14 antibody: synthetic peptide directed towards the N terminal of human RNF14. Synthetic peptide located within the following region: MSSEDREAQEDELLALASIYDGDEFKRAESVQGGETRIYLDLPQNFKIFV
Formulation:	Liquid. Purified antibody supplied in 1x PBS buffer with 0.09% (w/v) sodium azide and 2% sucrose. <i>Note that this product is shipped as lyophilized powder to China customers.</i>
Purification:	Affinity Purified
Conjugation:	Unconjugated
Storage:	Store at -20°C as received.
Stability:	Stable for 12 months from date of receipt.
Predicted Protein Size:	54 kDa
Gene Name:	ring finger protein 14
Database Link:	NP_004281 Entrez Gene 9604 Human Q9UBS8
Background:	RNF14 contains a RING zinc finger, a motif known to be involved in protein-protein interactions. This protein interacts with androgen receptor (AR) and may function as a coactivator that induces AR target gene expression in prostate. A dominant negative m
Synonyms:	ARA54; HFB30; HRIHFB2038; TRIAD2
Note:	Immunogen Sequence Homology: Dog: 100%; Pig: 100%; Rat: 100%; Horse: 100%; Human: 100%; Bovine: 100%; Guinea pig: 100%; Rabbit: 93%; Mouse: 86%



[View online »](#)

Protein Families: Druggable Genome, Transcription Factors

Product images:



WB Suggested Anti-RNF14 Antibody Titration: 0.2-1 ug/ml; ELISA Titer: 1: 12500; Positive Control: COLO205 cell lysate. RNF14 is supported by BioGPS gene expression data to be expressed in COLO205