

Product datasheet for **TA343450**

Cip4 (TRIP10) Rabbit Polyclonal Antibody

Product data:

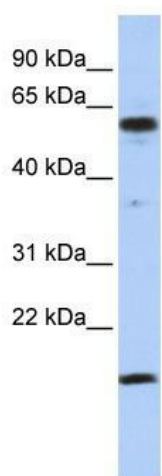
Product Type:	Primary Antibodies
Applications:	WB
Recommended Dilution:	WB
Reactivity:	Human
Host:	Rabbit
Isotype:	IgG
Clonality:	Polyclonal
Immunogen:	The immunogen for anti-TRIP10 antibody: synthetic peptide directed towards the middle region of human TRIP10. Synthetic peptide located within the following region: FEGSSEGTISMAEGEDLSLMEEDKGDGWTRVRRKEGGEGYVPTSYLRVTL
Formulation:	Liquid. Purified antibody supplied in 1x PBS buffer with 0.09% (w/v) sodium azide and 2% sucrose. <i>Note that this product is shipped as lyophilized powder to China customers.</i>
Purification:	Affinity Purified
Conjugation:	Unconjugated
Storage:	Store at -20°C as received.
Stability:	Stable for 12 months from date of receipt.
Predicted Protein Size:	62 kDa
Gene Name:	thyroid hormone receptor interactor 10
Database Link:	NP_004231 Entrez Gene 9322 Human Q15642
Background:	TRIP10 is in FNBP1 family of proteins.
Synonyms:	CIP4; HSTP; STOT; STP; TRIP-10
Note:	Immunogen Sequence Homology: Human: 100%; Dog: 93%; Pig: 93%; Rat: 93%; Horse: 93%; Bovine: 93%; Guinea pig: 93%; Mouse: 86%; Rabbit: 79%; Zebrafish: 79%
Protein Families:	Druggable Genome



[View online »](#)

Protein Pathways: Insulin signaling pathway

Product images:



WB Suggested Anti-TRIP10 Antibody Titration:
0.2-1 ug/ml; ELISA Titer: 1: 1562500; Positive
Control: Jurkat cell lysate