

## Product datasheet for **TA343445**

### ZNF213 Rabbit Polyclonal Antibody

#### Product data:

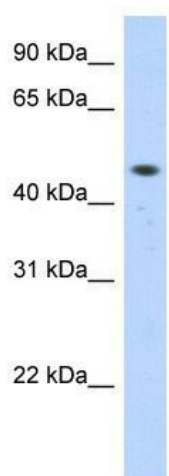
Product Type:	Primary Antibodies
Applications:	WB
Recommended Dilution:	WB
Reactivity:	Human
Host:	Rabbit
Isotype:	IgG
Clonality:	Polyclonal
Immunogen:	The immunogen for anti-ZNF213 antibody: synthetic peptide directed towards the middle region of human ZNF213. Synthetic peptide located within the following region: SFSLRSYLLDHRRVHTGERPFGCGECDKSFKQRAHLIAHQSLHAKMAQPV
Formulation:	Liquid. Purified antibody supplied in 1x PBS buffer with 0.09% (w/v) sodium azide and 2% sucrose. <i>Note that this product is shipped as lyophilized powder to China customers.</i>
Purification:	Affinity Purified
Conjugation:	Unconjugated
Storage:	Store at -20°C as received.
Stability:	Stable for 12 months from date of receipt.
Predicted Protein Size:	51 kDa
Gene Name:	zinc finger protein 213
Database Link:	<a href="#">NP_004211</a> <a href="#">Entrez Gene 7760 Human</a> <a href="#">O14771</a>
Background:	ZNF213 may be involved in transcriptional regulation. C2H2 zinc finger proteins, such as ZNF213, have bipartite structures in which one domain binds DNA or RNA and the other modulates target gene expression. [supplied by OMIM]
Synonyms:	CR53; ZKSCAN21; ZSCAN53
Note:	Immunogen Sequence Homology: Pig: 100%; Rat: 100%; Horse: 100%; Human: 100%; Mouse: 100%; Bovine: 100%; Rabbit: 100%; Guinea pig: 100%; Zebrafish: 77%



[View online »](#)

Protein Families: Transcription Factors

### Product images:



WB Suggested Anti-ZNF213 Antibody Titration:  
0.2-1 ug/ml; ELISA Titer: 1: 312500; Positive  
Control: Transfected 293T