

Product datasheet for **TA343444**

ZNF213 Rabbit Polyclonal Antibody

Product data:

| | |
|-------------------------|---|
| Product Type: | Primary Antibodies |
| Applications: | WB |
| Recommended Dilution: | WB |
| Reactivity: | Human |
| Host: | Rabbit |
| Isotype: | IgG |
| Clonality: | Polyclonal |
| Immunogen: | The immunogen for anti-ZNF213 antibody: synthetic peptide directed towards the N terminal of human ZNF213. Synthetic peptide located within the following region: MAAPLEAQDQAPGEGEGLLIVKVEDSSWEQESAQHEDGRDSEACRQRFRQ |
| Formulation: | Liquid. Purified antibody supplied in 1x PBS buffer with 0.09% (w/v) sodium azide and 2% sucrose. <i>Note that this product is shipped as lyophilized powder to China customers.</i> |
| Purification: | Protein A purified |
| Conjugation: | Unconjugated |
| Storage: | Store at -20°C as received. |
| Stability: | Stable for 12 months from date of receipt. |
| Predicted Protein Size: | 51 kDa |
| Gene Name: | zinc finger protein 213 |
| Database Link: | NP_004211 Entrez Gene 7760 Human O14771 |
| Background: | ZNF213 contains three C2H2 zinc fingers, a Kruppel associated A box and a leucine rich motif (LeR domain/SCAN box), strongly suggestive of a transcription factor. C2H2 zinc finger proteins, such as ZNF213, have bipartite structures in which one domain binds DNA or RNA and the other modulates target gene expression. [supplied by OMIM] |
| Synonyms: | CR53; ZKSCAN21; ZSCAN53 |

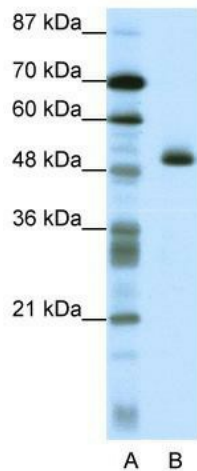


[View online »](#)

Note: Immunogen Sequence Homology: Rat: 100%; Human: 100%; Horse: 93%; Pig: 92%; Mouse: 92%; Bovine: 86%; Guinea pig: 86%

Protein Families: Transcription Factors

Product images:



WB Suggested Anti-ZNF213 Antibody Titration:
1.25 ug/ml; ELISA Titer: 1: 312500; Positive
Control: HepG2 cell lysate