

Product datasheet for **TA343442**

TANK Rabbit Polyclonal Antibody

Product data:

Product Type:	Primary Antibodies
Applications:	WB
Recommended Dilution:	WB
Reactivity:	Human
Host:	Rabbit
Isotype:	IgG
Clonality:	Polyclonal
Immunogen:	The immunogen for anti-TANK antibody: synthetic peptide directed towards the C terminal of human TANK. Synthetic peptide located within the following region: KPFPNQDSDSVLSGTDSELHIPRVCEFCQAVFPPSITSRGDFLRHLNSH
Formulation:	Liquid. Purified antibody supplied in 1x PBS buffer with 0.09% (w/v) sodium azide and 2% sucrose. <i>Note that this product is shipped as lyophilized powder to China customers.</i>
Purification:	Affinity Purified
Conjugation:	Unconjugated
Storage:	Store at -20°C as received.
Stability:	Stable for 12 months from date of receipt.
Predicted Protein Size:	48 kDa
Gene Name:	TRAF family member associated NFKB activator
Database Link:	NP_004171 Entrez Gene 10010 Human Q92844
Background:	The TRAF (tumor necrosis factor receptor-associated factor) family of proteins associate with and transduce signals from members of the tumor necrosis factor receptor superfamily. TANK is found in the cytoplasm and can bind to TRAF1, TRAF2, or TRAF3, the
Synonyms:	I-TRAF; ITRAF; TRAF2
Note:	Immunogen Sequence Homology: Human: 100%; Rabbit: 93%; Rat: 79%

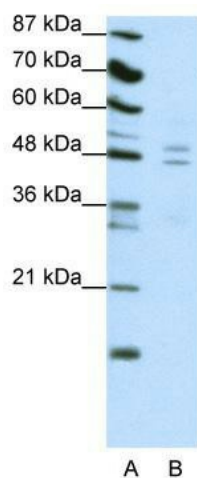


[View online »](#)

Protein Families: Druggable Genome

Protein Pathways: RIG-I-like receptor signaling pathway

Product images:



WB Suggested Anti-TANK Antibody Titration: 0.2-1 ug/ml; ELISA Titer: 1: 62500; Positive Control: Jurkat cell lysate