

## Product datasheet for **TA343438**

### IRF7 Rabbit Polyclonal Antibody

#### Product data:

Product Type:	Primary Antibodies
Applications:	WB
Recommended Dilution:	WB
Reactivity:	Human
Host:	Rabbit
Isotype:	IgG
Clonality:	Polyclonal
Immunogen:	The immunogen for anti-IRF7 antibody: synthetic peptide directed towards the N terminal of human IRF7. Synthetic peptide located within the following region: ISSGCYEGLQWLDEARTCFRVPWKHFARKDLSEADARIFKAWAVARGRWP
Formulation:	Liquid. Purified antibody supplied in 1x PBS buffer with 0.09% (w/v) sodium azide and 2% sucrose. <i>Note that this product is shipped as lyophilized powder to China customers.</i>
Purification:	Affinity Purified
Conjugation:	Unconjugated
Storage:	Store at -20°C as received.
Stability:	Stable for 12 months from date of receipt.
Predicted Protein Size:	18 kDa
Gene Name:	interferon regulatory factor 7
Database Link:	<a href="#">NP_004022</a> <a href="#">Entrez Gene 3665 Human Q92985</a>

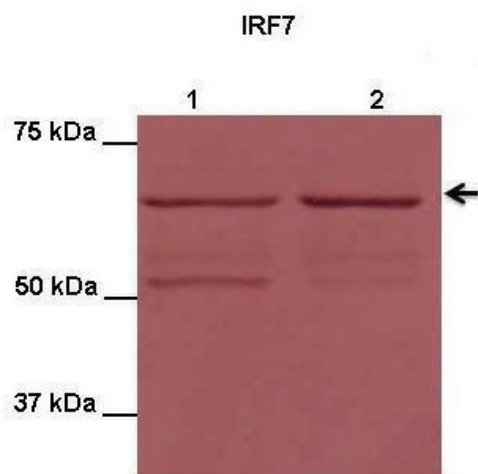


[View online »](#)

<b>Background:</b>	IRF7 is interferon regulatory factor 7, a member of the interferon regulatory transcription factor (IRF) family. IRF7 has been shown to play a role in the transcriptional activation of virus-inducible cellular genes, including interferon beta chain genes. Inducible expression of IRF7 is largely restricted to lymphoid tissue. IRF7 encodes interferon regulatory factor 7, a member of the interferon regulatory transcription factor (IRF) family. IRF7 has been shown to play a role in the transcriptional activation of virus-inducible cellular genes, including interferon beta chain genes. Inducible expression of IRF7 is largely restricted to lymphoid tissue. Multiple IRF7 transcript variants have been identified, although the functional consequences of these have not yet been established.
<b>Synonyms:</b>	IMD39; IRF-7H; IRF7A; IRF7B; IRF7C; IRF7H
<b>Note:</b>	Immunogen Sequence Homology: Human: 100%; Pig: 93%; Rat: 93%; Bovine: 93%; Rabbit: 93%; Horse: 79%; Mouse: 79%; Zebrafish: 75%
<b>Protein Families:</b>	Transcription Factors
<b>Protein Pathways:</b>	Cytosolic DNA-sensing pathway, RIG-I-like receptor signaling pathway, Toll-like receptor signaling pathway

**Product images:**

WB Suggested Anti-IRF7 Antibody Titration: 0.2-1 ug/ml; ELISA Titer: 1: 1562500; Positive Control: HeLa cell lysate



Application: Western blotting. Species+tissue/cell type: HEK293T cells. How many ug's of tissue/cell lysate run on the gel: 10 ug IRF7 transfected HEK293T lysate; Primary antibody dilution: 1:1000; Secondary antibody: Donkey Anti-rabbit AP Secondary antibody