

## Product datasheet for **TA343434**

### TIMELESS Rabbit Polyclonal Antibody

#### Product data:

Product Type:	Primary Antibodies
Applications:	WB
Recommended Dilution:	WB
Reactivity:	Human
Host:	Rabbit
Isotype:	IgG
Clonality:	Polyclonal
Immunogen:	The immunogen for anti-TIMELESS antibody: synthetic peptide directed towards the N terminal of human TIMELESS. Synthetic peptide located within the following region: MDLHMMNCELLATCSALGYLEGDTYHKEPDCLESVKDLIRYL RHEDETRD
Formulation:	Liquid. Purified antibody supplied in 1x PBS buffer with 0.09% (w/v) sodium azide and 2% sucrose. <i>Note that this product is shipped as lyophilized powder to China customers.</i>
Purification:	Protein A purified
Conjugation:	Unconjugated
Storage:	Store at -20°C as received.
Stability:	Stable for 12 months from date of receipt.
Predicted Protein Size:	139 kDa
Gene Name:	timeless circadian clock
Database Link:	<a href="#">NP_003911</a> <a href="#">Entrez Gene 8914 Human</a> <a href="#">Q9UNS1</a>
Background:	The human Timeless protein interacts with both the circadian clock protein cryptochrome 2 and with the cell cycle checkpoint proteins Chk1 and the ATR-ATRIP complex and plays an important role in the DNA damage checkpoint response. Down-regulation of Timeless in human cells seriously compromises replication and intra-S checkpoints, indicating an intimate connection between the circadian cycle and the DNA damage checkpoints that is in part mediated by the Timeless protein.



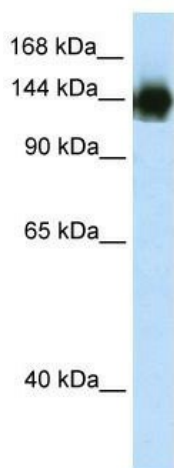
[View online »](#)

**Synonyms:** hTIM; TIM; TIM1

**Note:** Immunogen Sequence Homology: Dog: 100%; Pig: 100%; Horse: 100%; Human: 100%; Sheep: 100%; Bovine: 100%; Rabbit: 100%; Rat: 93%; Mouse: 93%; Zebrafish: 93%; Guinea pig: 93%

**Protein Families:** Transcription Factors

**Product images:**



WB Suggested Anti-TIMELESS Antibody Titration:  
2.5 ug/ml; ELISA Titer: 1: 312500; Positive Control:  
Transfected 293T