

## Product datasheet for **TA343433**

### **BUD31 Rabbit Polyclonal Antibody**

#### **Product data:**

<b>Product Type:</b>	Primary Antibodies
<b>Applications:</b>	WB
<b>Recommended Dilution:</b>	WB
<b>Reactivity:</b>	Human
<b>Host:</b>	Rabbit
<b>Isotype:</b>	IgG
<b>Clonality:</b>	Polyclonal
<b>Immunogen:</b>	The immunogen for anti-BUD31 antibody: synthetic peptide directed towards the middle region of human BUD31. Synthetic peptide located within the following region: SRELYEYCIKEGYADKNLIAKWKQGYENLCLLRICIQRDTNFGTNCICR
<b>Formulation:</b>	Liquid. Purified antibody supplied in 1x PBS buffer with 0.09% (w/v) sodium azide and 2% sucrose. <i>Note that this product is shipped as lyophilized powder to China customers.</i>
<b>Purification:</b>	Affinity Purified
<b>Conjugation:</b>	Unconjugated
<b>Storage:</b>	Store at -20°C as received.
<b>Stability:</b>	Stable for 12 months from date of receipt.
<b>Predicted Protein Size:</b>	17 kDa
<b>Gene Name:</b>	BUD31 homolog
<b>Database Link:</b>	<a href="#">NP_003901</a> <a href="#">Entrez Gene 8896 Human</a> <a href="#">P41223</a>
<b>Background:</b>	BUD31 may be a nuclear regulator of transcription.
<b>Synonyms:</b>	Cwc14; EDG-2; EDG2; fSAP17; G10; YCR063W
<b>Note:</b>	Immunogen Sequence Homology: Dog: 100%; Pig: 100%; Rat: 100%; Horse: 100%; Human: 100%; Mouse: 100%; Yeast: 100%; Bovine: 100%; Rabbit: 100%; Zebrafish: 100%; Guinea pig: 100%; Goat: 92%

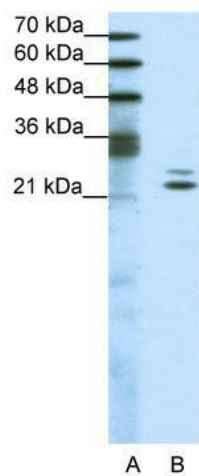


[View online »](#)

Protein Families: Transcription Factors

Protein Pathways: Spliceosome

### Product images:



WB Suggested Anti-BUD31 Antibody Titration:  
1.25 ug/ml; ELISA Titer: 1: 1562500; Positive  
Control: Jurkat cell lysate