

Product datasheet for **TA343432**

BUD31 Rabbit Polyclonal Antibody

Product data:

Product Type:	Primary Antibodies
Applications:	WB
Recommended Dilution:	WB
Reactivity:	Human
Host:	Rabbit
Isotype:	IgG
Clonality:	Polyclonal
Immunogen:	The immunogen for anti-BUD31 antibody: synthetic peptide directed towards the N terminal of human BUD31. Synthetic peptide located within the following region: PKVKRSRKAPPDGWELIEPTLDELQKMREAETEPHEGKRKVESLWPIFR
Formulation:	Liquid. Purified antibody supplied in 1x PBS buffer with 0.09% (w/v) sodium azide and 2% sucrose. <i>Note that this product is shipped as lyophilized powder to China customers.</i>
Purification:	Affinity Purified
Conjugation:	Unconjugated
Storage:	Store at -20°C as received.
Stability:	Stable for 12 months from date of receipt.
Predicted Protein Size:	17 kDa
Gene Name:	BUD31 homolog
Database Link:	NP_003901 Entrez Gene 8896 Human P41223
Background:	The exact function of BUD31 remains unknown.
Synonyms:	Cwc14; EDG-2; EDG2; fSAP17; G10; YCR063W
Note:	Immunogen Sequence Homology: Dog: 100%; Pig: 100%; Rat: 100%; Horse: 100%; Human: 100%; Mouse: 100%; Bovine: 100%; Rabbit: 100%; Zebrafish: 100%; Guinea pig: 100%; Yeast: 79%

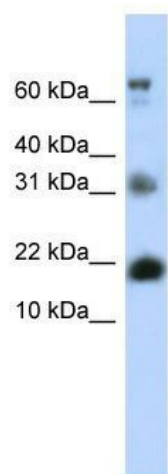


[View online »](#)

Protein Families: Transcription Factors

Protein Pathways: Spliceosome

Product images:



WB Suggested Anti-BUD31 Antibody Titration:
0.2-1 ug/ml; ELISA Titer: 1: 312500; Positive
Control: Transfected 293T