

## Product datasheet for **TA343428**

### SAP30 Rabbit Polyclonal Antibody

#### Product data:

Product Type:	Primary Antibodies
Applications:	WB
Recommended Dilution:	WB
Reactivity:	Human
Host:	Rabbit
Isotype:	IgG
Clonality:	Polyclonal
Immunogen:	The immunogen for anti-SAP30 antibody: synthetic peptide directed towards the N terminal of human SAP30. Synthetic peptide located within the following region: MNGFTPDEMSRGGDAAAVAAVVAAAAAASAGNGTGAGTGAEVPGAGAV
Formulation:	Liquid. Purified antibody supplied in 1x PBS buffer with 0.09% (w/v) sodium azide and 2% sucrose. <i>Note that this product is shipped as lyophilized powder to China customers.</i>
Purification:	Protein A purified
Conjugation:	Unconjugated
Storage:	Store at -20°C as received.
Stability:	Stable for 12 months from date of receipt.
Predicted Protein Size:	23 kDa
Gene Name:	Sin3A associated protein 30kDa
Database Link:	<a href="#">NP_003855</a> <a href="#">Entrez Gene 8819 Human</a> <a href="#">O75446</a>



[View online »](#)

**Background:**

Histone acetylation plays a key role in the regulation of eukaryotic gene expression. Histone acetylation and deacetylation are catalyzed by multisubunit complexes. SAP30 is a component of the histone deacetylase complex, which includes SIN3, SAP18, HDAC1, HDAC2, RbAp46, RbAp48, and other polypeptides. This complex is active in deacetylating core histone octamers, but inactive in deacetylating nucleosomal histones. Histone acetylation plays a key role in the regulation of eukaryotic gene expression. Histone acetylation and deacetylation are catalyzed by multisubunit complexes. The protein encoded by this gene is a component of the histone deacetylase complex, which includes SIN3, SAP18, HDAC1, HDAC2, RbAp46, RbAp48, and other polypeptides. This complex is active in deacetylating core histone octamers, but inactive in deacetylating nucleosomal histones. A pseudogene of this gene is located on chromosome 3.

**Synonyms:**

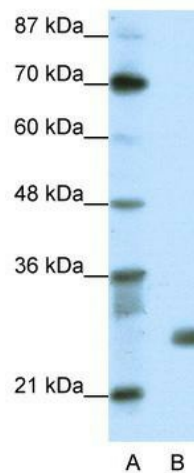
30kD; 30kDa; histone deacetylase complex subunit SAP30; Sin3 corepressor complex subunit SAP30; Sin3-associated polypeptide; Sin3A-associated protein

**Note:**

Immunogen Sequence Homology: Human: 100%; Dog: 93%; Pig: 93%; Rat: 93%; Mouse: 93%; Rabbit: 93%; Guinea pig: 93%; Bovine: 86%

**Protein Families:**

Druggable Genome, Transcription Factors

**Product images:**

WB Suggested Anti-SAP30 Antibody Titration:  
1.25 ug/ml; ELISA Titer: 1: 312500; Positive  
Control: Transfected 293T