

Product datasheet for **TA343427**

CREG1 Rabbit Polyclonal Antibody

Product data:

Product Type:	Primary Antibodies
Applications:	WB
Recommended Dilution:	WB
Reactivity:	Human
Host:	Rabbit
Isotype:	IgG
Clonality:	Polyclonal
Immunogen:	The immunogen for anti-CREG1 antibody: synthetic peptide directed towards the N terminal of human CREG1. Synthetic peptide located within the following region: MAGLSRGSARALLAALLASTLLALLVSPARGRGRDHGDWDEASRLPPLP
Formulation:	Liquid. Purified antibody supplied in 1x PBS buffer with 0.09% (w/v) sodium azide and 2% sucrose. <i>Note that this product is shipped as lyophilized powder to China customers.</i>
Purification:	Affinity Purified
Conjugation:	Unconjugated
Storage:	Store at -20°C as received.
Stability:	Stable for 12 months from date of receipt.
Predicted Protein Size:	24 kDa
Gene Name:	cellular repressor of E1A stimulated genes 1
Database Link:	NP_003842 Entrez Gene 8804 Human O75629



[View online »](#)

Background:

The adenovirus E1A protein both activates and represses gene expression to promote cellular proliferation and inhibit differentiation. CREG1 antagonizes transcriptional activation and cellular transformation by E1A. This protein shares limited sequence similarity with E1A and binds both the general transcription factor TBP and the tumor suppressor pRb in vitro. The adenovirus E1A protein both activates and represses gene expression to promote cellular proliferation and inhibit differentiation. The protein encoded by this gene antagonizes transcriptional activation and cellular transformation by E1A. This protein shares limited sequence similarity with E1A and binds both the general transcription factor TBP and the tumor suppressor pRb in vitro. This gene may contribute to the transcriptional control of cell growth and differentiation.

Synonyms:

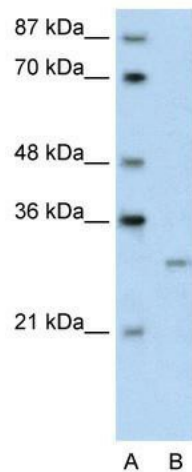
CREG

Note:

Immunogen Sequence Homology: Human: 100%; Rabbit: 100%; Dog: 93%; Rat: 93%; Horse: 93%; Mouse: 93%; Bovine: 86%

Protein Families:

Secreted Protein, Transcription Factors, Transmembrane

Product images:

WB Suggested Anti-CREG1 Antibody Titration: 0.2-1 ug/ml; ELISA Titer: 1: 1562500; Positive Control: Transfected 293T