

Product datasheet for **TA343424**

EED Rabbit Polyclonal Antibody

Product data:

Product Type:	Primary Antibodies
Applications:	WB
Recommended Dilution:	WB
Reactivity:	Human, Mouse
Host:	Rabbit
Isotype:	IgG
Clonality:	Polyclonal
Immunogen:	The immunogen for anti-EED antibody: synthetic peptide directed towards the N terminal of human EED. Synthetic peptide located within the following region: QKLSSDENSNDLSGDENDDAVSIESGTNTERPDTPTNTPNAPGRKSWGK
Formulation:	Liquid. Purified antibody supplied in 1x PBS buffer with 0.09% (w/v) sodium azide and 2% sucrose. <i>Note that this product is shipped as lyophilized powder to China customers.</i>
Purification:	Affinity Purified
Conjugation:	Unconjugated
Storage:	Store at -20°C as received.
Stability:	Stable for 12 months from date of receipt.
Predicted Protein Size:	45 kDa
Gene Name:	embryonic ectoderm development
Database Link:	NP_694536 Entrez Gene 13626 Mouse Entrez Gene 8726 Human O75530
Background:	EED is a member of the Polycomb-group (PcG) family. PcG family members form multimeric protein complexes, which are involved in maintaining the transcriptional repressive state of genes over successive cell generations. This protein interacts with enhancer of zeste 2, the cytoplasmic tail of integrin beta7, immunodeficiency virus type 1 (HIV-1) MA protein, and histone deacetylase proteins. This protein mediates repression of gene activity through histone deacetylation, and may act as a specific regulator of integrin function.



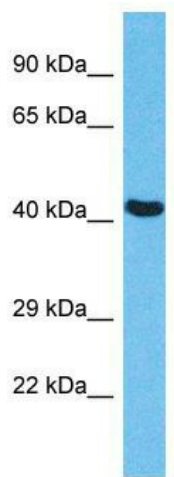
[View online »](#)

Synonyms: HEED; WAIT1

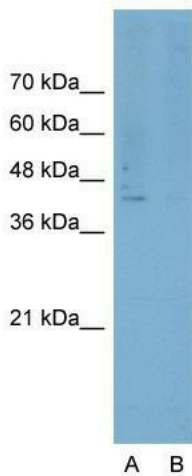
Note: Immunogen Sequence Homology: Dog: 100%; Pig: 100%; Rat: 100%; Horse: 100%; Human: 100%; Mouse: 100%; Bovine: 100%; Rabbit: 100%; Guinea pig: 100%; Zebrafish: 86%

Protein Families: Druggable Genome, Transcription Factors

Product images:



Host: Rabbit; Target Name: EED; Sample Tissue: HepG2 Whole Cell lysates; Antibody Dilution: 1.0 ug/ml



Anti-EED Western Blot & Peptide Block Validation

Lysate: HepG2 Cell

Lane A: Primary Antibody
 Lane B: Primary Antibody + Blocking Peptide
 Primary Antibody Concentration: 4.0 µg/ml
 Peptide Concentration: 2.0 µg/ml
 Lysate Quantity: 25 µg/lane
 Gel Concentration: 12%

Host: Rabbit; Target Name: EED; Sample Tissue: HepG2; Lane A: Primary Antibody; Lane B: Primary Antibody + Blocking Peptide; Primary Antibody Concentration: 4.0 ug/mL; Peptide Concentration: 2.0 ug/mL; Lysate Quantity: 25 ug/lane; Gel Concentration: 12%