

## Product datasheet for **TA343423**

### EDF1 Rabbit Polyclonal Antibody

#### Product data:

Product Type:	Primary Antibodies
Applications:	IF, IHC, WB
Recommended Dilution:	WB, IF, IHC
Reactivity:	Human
Host:	Rabbit
Isotype:	IgG
Clonality:	Polyclonal
Immunogen:	The immunogen for anti-EDF1 antibody: synthetic peptide directed towards the middle region of human EDF1. Synthetic peptide located within the following region: INEKPQVIADYESGRAIPNNQVLGKIERAIGLKLRGKDIGKPIEKGPRAK
Formulation:	Liquid. Purified antibody supplied in 1x PBS buffer with 0.09% (w/v) sodium azide and 2% sucrose. <i>Note that this product is shipped as lyophilized powder to China customers.</i>
Purification:	Affinity Purified
Conjugation:	Unconjugated
Storage:	Store at -20°C as received.
Stability:	Stable for 12 months from date of receipt.
Predicted Protein Size:	16 kDa
Gene Name:	endothelial differentiation related factor 1
Database Link:	<a href="#">NP_003783</a> <a href="#">Entrez Gene 8721 Human</a> <a href="#">O60869</a>



[View online »](#)

**Background:**

EDF1 encodes a protein that may regulate endothelial cell differentiation. It has been postulated that the protein functions as a bridging molecule that interconnects regulatory proteins and the basal transcriptional machinery, thereby modulating the transcription of genes involved in endothelial differentiation. This protein has also been found to act as a transcriptional coactivator by interconnecting the general transcription factor TATA element-binding protein (TBP) and gene-specific activators. Two alternatively spliced transcripts which encode distinct proteins have been found for this gene. This gene encodes a protein that may regulate endothelial cell differentiation. It has been postulated that the protein functions as a bridging molecule that interconnects regulatory proteins and the basal transcriptional machinery, thereby modulating the transcription of genes involved in endothelial differentiation. This protein has also been found to act as a transcriptional coactivator by interconnecting the general transcription factor TATA element-binding protein (TBP) and gene-specific activators. Two alternatively spliced transcripts which encode distinct proteins have been found for this gene.

**Synonyms:**

CFAP280; EDF-1; MBF1

**Note:**

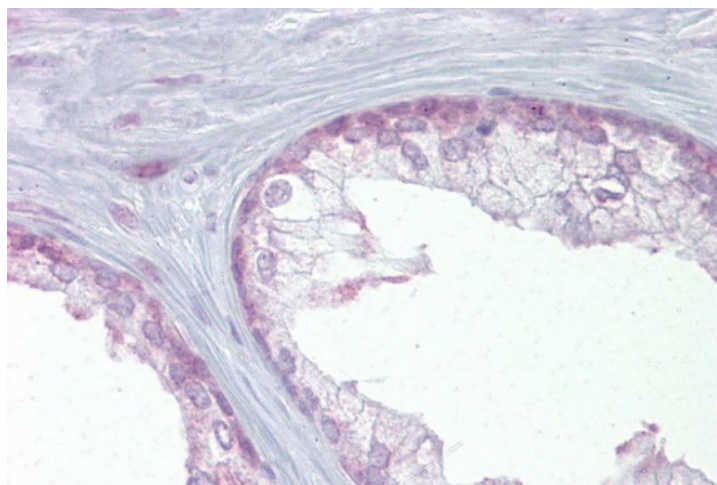
Immunogen Sequence Homology: Dog: 100%; Pig: 100%; Rat: 100%; Horse: 100%; Human: 100%; Bovine: 100%; Guinea pig: 100%; Mouse: 93%

**Protein Families:**

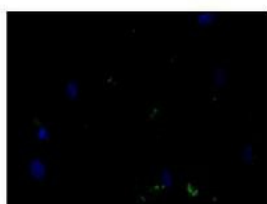
Druggable Genome, Transcription Factors

**Product images:**

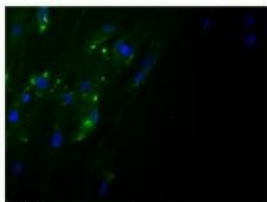
WB Suggested Anti-EDF1 Antibody Titration: 0.2-1 ug/ml; ELISA Titer: 1: 312500; Positive Control: Human brain



Immunohistochemistry with Prostate tissue at an antibody concentration of 5 ug/ml using anti-EDF1 antibody



Control: No antibody



EDF1

Sample Type: Fibroblasts;