

## Product datasheet for **TA343421**

### BLZF1 Rabbit Polyclonal Antibody

#### Product data:

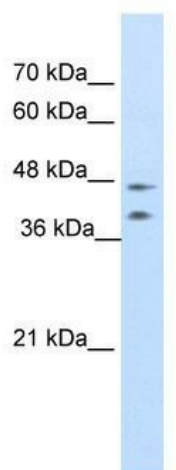
Product Type:	Primary Antibodies
Applications:	IHC, WB
Recommended Dilution:	WB, IHC
Reactivity:	Human
Host:	Rabbit
Isotype:	IgG
Clonality:	Polyclonal
Immunogen:	The immunogen for anti-BLZF1 antibody: synthetic peptide directed towards the C terminal of human BLZF1. Synthetic peptide located within the following region: DPVTCKESSPDNPFESSPTLLATKKNIGRFHPYTRYENITFNCCNHCR
Formulation:	Liquid. Purified antibody supplied in 1x PBS buffer with 0.09% (w/v) sodium azide and 2% sucrose. <i>Note that this product is shipped as lyophilized powder to China customers.</i>
Purification:	Protein A purified
Conjugation:	Unconjugated
Storage:	Store at -20°C as received.
Stability:	Stable for 12 months from date of receipt.
Predicted Protein Size:	45 kDa
Gene Name:	basic leucine zipper nuclear factor 1
Database Link:	<a href="#">NP_003657</a> <a href="#">Entrez Gene 8548 Human</a> <a href="#">Q9H2G9</a>
Background:	BLZF1 is required for normal Golgi structure and for protein transport from the endoplasmic reticulum (ER) through the Golgi apparatus to the cell surface.
Synonyms:	GOLGIN-45; JEM-1; JEM-1s; JEM1
Note:	Immunogen Sequence Homology: Dog: 100%; Pig: 100%; Rat: 100%; Horse: 100%; Human: 100%; Mouse: 100%; Bovine: 100%; Guinea pig: 100%; Rabbit: 93%; Zebrafish: 93%



[View online »](#)

Protein Families: Transcription Factors

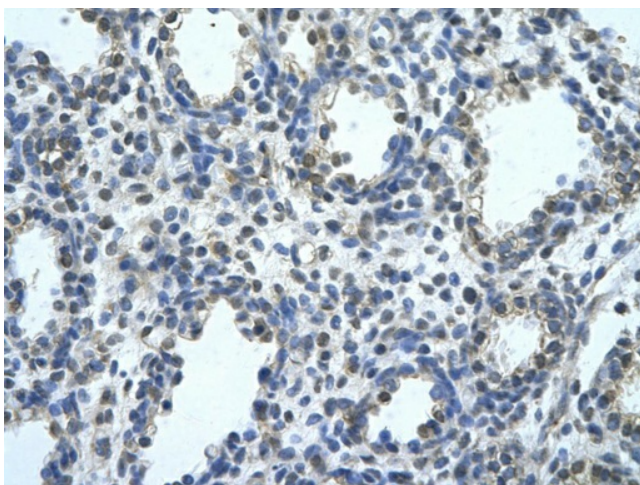
**Product images:**



WB Suggested Anti-BLZF1 Antibody Titration: 0.2-1 ug/ml; Positive Control: Jurkat cell lysate



Human Brain



Rabbit Anti-BLZF1 Antibody; Paraffin Embedded  
Tissue: Human alveolar cell; Cellular Data:  
Epithelial cells of renal tubule; Antibody  
Concentration: 4.0-8.0 ug/ml; Magnification: 400X