

Product datasheet for **TA343419**

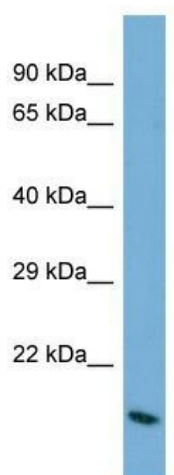
BARX2 Rabbit Polyclonal Antibody

Product data:

Product Type:	Primary Antibodies
Applications:	WB
Recommended Dilution:	WB
Reactivity:	Human
Host:	Rabbit
Isotype:	IgG
Clonality:	Polyclonal
Immunogen:	The immunogen for Anti-BARX2 antibody is: synthetic peptide directed towards the C-terminal region of Human BARX2. Synthetic peptide located within the following region: EEIEAEEKMNSQAQQGQEQLEPSQGQEELCEAQEPKARDVPLEMAEPPDPP
Formulation:	Liquid. Purified antibody supplied in 1x PBS buffer with 0.09% (w/v) sodium azide and 2% sucrose.
Purification:	Affinity Purified
Conjugation:	Unconjugated
Storage:	Store at -20°C as received.
Stability:	Stable for 12 months from date of receipt.
Predicted Protein Size:	14 kDa
Gene Name:	BARX homeobox 2
Database Link:	NP_003649 Entrez Gene 8538 Human Q9UMQ3
Background:	The function of this protein remains unknown.
Synonyms:	MGC133368; MGC133369
Note:	Immunogen Sequence Homology: Human: 100%; Rat: 86%; Dog: 79%; Pig: 79%; Guinea pig: 79%
Protein Families:	Transcription Factors



[View online »](#)

Product images:

Host: Rabbit; Target Name: BARX2; Sample
Tissue: HepG2 Whole Cell lysates; Antibody
Dilution: 1.0 ug/ml