

## Product datasheet for **TA343415**

### FKLF / KLF11 (KLF11) Rabbit Polyclonal Antibody

#### Product data:

Product Type:	Primary Antibodies
Applications:	WB
Recommended Dilution:	WB
Reactivity:	Human
Host:	Rabbit
Isotype:	IgG
Clonality:	Polyclonal
Immunogen:	The immunogen for anti-KLF11 antibody: synthetic peptide directed towards the C terminal of human KLF11. Synthetic peptide located within the following region: KFARSDELSRHRRHTHTGEKKFVCPVCDRRFMRSDDLTKHARRHMTTKIP
Formulation:	Liquid. Purified antibody supplied in 1x PBS buffer with 0.09% (w/v) sodium azide and 2% sucrose. <i>Note that this product is shipped as lyophilized powder to China customers.</i>
Purification:	Affinity Purified
Conjugation:	Unconjugated
Storage:	Store at -20°C as received.
Stability:	Stable for 12 months from date of receipt.
Predicted Protein Size:	55 kDa
Gene Name:	Kruppel-like factor 11
Database Link:	<a href="#">NP_003588</a> <a href="#">Entrez Gene 8462 Human</a> <a href="#">O14901</a>
Background:	KLF11 (TIEG2) is a pancreas-enriched transcription factor that has elicited significant attention because of its role as negative regulator of exocrine cell growth in vitro and in vivo. It plays a role in the regulation of pancreatic beta cell physiology, and its variants may contribute to the development of diabetes.
Synonyms:	FKLF; FKLF1; MODY7; TIEG2; Tieg3

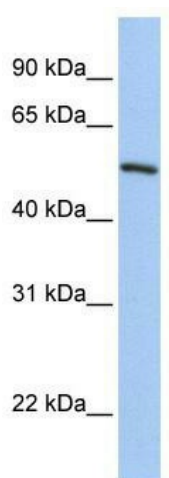


[View online »](#)

**Note:** Immunogen Sequence Homology: Dog: 100%; Pig: 100%; Rat: 100%; Horse: 100%; Human: 100%; Mouse: 100%; Bovine: 100%; Rabbit: 100%; Zebrafish: 100%; Guinea pig: 100%

**Protein Families:** Transcription Factors

**Product images:**



WB Suggested Anti-KLF11 Antibody Titration: 0.2-1 ug/ml; ELISA Titer: 1: 1562500; Positive Control: 721\_B cell lysate