

Product datasheet for **TA343412**

ZNF282 Rabbit Polyclonal Antibody

Product data:

Product Type:	Primary Antibodies
Applications:	WB
Recommended Dilution:	WB
Reactivity:	Human
Host:	Rabbit
Isotype:	IgG
Clonality:	Polyclonal
Immunogen:	The immunogen for anti-ZNF282 antibody: synthetic peptide directed towards the N terminal of human ZNF282. Synthetic peptide located within the following region: QQLGIQGLGLDSGSWSWAQALPPEEVCHQEPAIRGEMAEGMPPMQAQEWD
Formulation:	Liquid. Purified antibody supplied in 1x PBS buffer with 0.09% (w/v) sodium azide and 2% sucrose.
Purification:	Protein A purified
Conjugation:	Unconjugated
Storage:	Store at -20°C as received.
Stability:	Stable for 12 months from date of receipt.
Predicted Protein Size:	74 kDa
Gene Name:	zinc finger protein 282
Database Link:	NP_003566 Entrez Gene 8427 Human Q9UDV7
Background:	ZNF282 contains 1 KRAB domain and 5 C2H2-type zinc fingers. It belongs to the krueppel C2H2-type zinc-finger protein family and binds to the U5 repressive element (U5RE) of the human T cell leukemia virus I long terminal repeat.

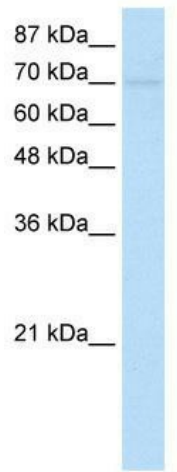


Synonyms: HUB1

Note: Immunogen Sequence Homology: Human: 100%; Rabbit: 100%; Dog: 93%; Pig: 93%; Rat: 93%; Mouse: 93%; Guinea pig: 93%

Protein Families: Transcription Factors

Product images:



WB Suggested Anti-ZNF282 Antibody Titration:
1.25 μ g/ml; ELISA Titer: 1: 312500; Positive
Control: Transfected 293T