

Product datasheet for **TA343408**

ZNF875 Rabbit Polyclonal Antibody

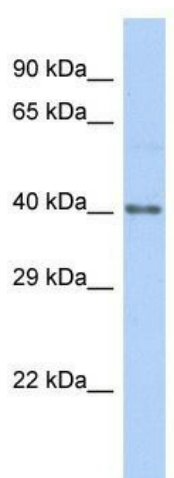
Product data:

Product Type:	Primary Antibodies
Applications:	WB
Recommended Dilution:	WB
Reactivity:	Human
Host:	Rabbit
Isotype:	IgG
Clonality:	Polyclonal
Immunogen:	The immunogen for Anti-HKR1 antibody is: synthetic peptide directed towards the C-terminal region of Human HKR1. Synthetic peptide located within the following region: LIKHQRAHAGGKPHVCRECGQGFSRQSHLIRHQRTHSGEKPYICRKCGRG
Formulation:	Liquid. Purified antibody supplied in 1x PBS buffer with 0.09% (w/v) sodium azide and 2% sucrose.
Purification:	Affinity Purified
Conjugation:	Unconjugated
Storage:	Store at -20°C as received.
Stability:	Stable for 12 months from date of receipt.
Predicted Protein Size:	42 kDa
Gene Name:	HKR1, GLI-Kruppel zinc finger family member
Database Link:	NP_861451 Entrez Gene 284459 Human P10072
Background:	The function of this protein remains unknown.
Synonyms:	ZNF875
Note:	Immunogen Sequence Homology: Dog: 100%; Pig: 100%; Horse: 100%; Human: 100%; Rabbit: 100%; Rat: 93%; Bovine: 92%; Mouse: 85%
Protein Families:	Druggable Genome, Transcription Factors



[View online »](#)

Product images:



Host: Rabbit; Target Name: HKR1; Sample Tissue: HeLa Whole Cell lysates; Antibody Dilution: 1.0 ug/ml