

Product datasheet for **TA343406**

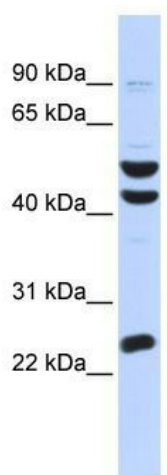
ZFP200 (ZNF200) Rabbit Polyclonal Antibody

Product data:

Product Type:	Primary Antibodies
Applications:	WB
Recommended Dilution:	WB
Reactivity:	Human
Host:	Rabbit
Isotype:	IgG
Clonality:	Polyclonal
Immunogen:	The immunogen for anti-ZNF200 antibody: synthetic peptide directed towards the middle region of human ZNF200. Synthetic peptide located within the following region: SRHEGIHIREKIFKCECGKTFPKNEEFVLHLSHEAERPYGCKKCGRRF
Formulation:	Liquid. Purified antibody supplied in 1x PBS buffer with 0.09% (w/v) sodium azide and 2% sucrose. <i>Note that this product is shipped as lyophilized powder to China customers.</i>
Purification:	Affinity Purified
Conjugation:	Unconjugated
Storage:	Store at -20°C as received.
Stability:	Stable for 12 months from date of receipt.
Predicted Protein Size:	45 kDa
Gene Name:	zinc finger protein 200
Database Link:	NP_003445 Entrez Gene 7752 Human P98182
Background:	ZNF200 contains 5 C2H2-type zinc fingers. ZNF200 could have a role in spermatogenesis.
Synonyms:	MGC45293
Note:	Immunogen Sequence Homology: Pig: 100%; Rat: 100%; Human: 100%; Guinea pig: 100%; Horse: 93%; Rabbit: 86%; Bovine: 77%
Protein Families:	Transcription Factors



[View online »](#)

Product images:

WB Suggested Anti-ZNF200 Antibody Titration: 0.2-1 ug/ml; ELISA Titer: 1: 1562500; Positive Control: OVCAR-3 cell lysate; ZNF200 is strongly supported by BioGPS gene expression data to be expressed in Human OVCAR3 cells