

## Product datasheet for **TA343404**

### ZNF177 Rabbit Polyclonal Antibody

#### Product data:

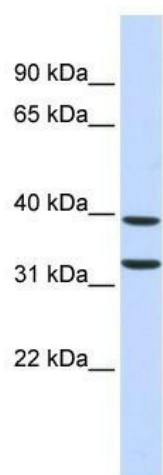
Product Type:	Primary Antibodies
Applications:	WB
Recommended Dilution:	WB
Reactivity:	Human
Host:	Rabbit
Isotype:	IgG
Clonality:	Polyclonal
Immunogen:	The immunogen for anti-ZNF177 antibody: synthetic peptide directed towards the middle region of human ZNF177. Synthetic peptide located within the following region: AFRNSSCLRVRHTHTGEKPYKCFQCEKAFSTSTNLIMHKRIHNGQKLHE
Formulation:	Liquid. Purified antibody supplied in 1x PBS buffer with 0.09% (w/v) sodium azide and 2% sucrose.
Purification:	Affinity Purified
Conjugation:	Unconjugated
Storage:	Store at -20°C as received.
Stability:	Stable for 12 months from date of receipt.
Predicted Protein Size:	36 kDa
Gene Name:	zinc finger protein 177
Database Link:	<a href="#">NP_003442</a> <a href="#">Entrez Gene 7730 Human</a> <a href="#">Q13360</a>
Background:	ZNF177 contains 1 KRAB domain and 7 C2H2-type zinc fingers. ZNF177 belongs to the krueppel C2H2-type zinc-finger protein family. And it may be involved in transcriptional regulation.
Synonyms:	PIGX
Note:	Immunogen Sequence Homology: Human: 100%; Horse: 86%; Bovine: 86%; Mouse: 83%; Rat: 82%



[View online »](#)

Protein Families: Transcription Factors

**Product images:**



WB Suggested Anti-ZNF177 Antibody Titration:  
0.2-1 ug/ml; ELISA Titer: 1: 62500; Positive  
Control: Human Pancreas