

Product datasheet for **TA343402**

ZNF157 Rabbit Polyclonal Antibody

Product data:

Product Type:	Primary Antibodies
Applications:	WB
Recommended Dilution:	WB
Reactivity:	Human
Host:	Rabbit
Isotype:	IgG
Clonality:	Polyclonal
Immunogen:	The immunogen for anti-ZNF157 antibody: synthetic peptide directed towards the N terminal of human ZNF157. Synthetic peptide located within the following region: PANGTSPQRFPALIPGEPGRSFEGSVSFEDVAVDFTRQEWHRDPAQRMTM
Formulation:	Liquid. Purified antibody supplied in 1x PBS buffer with 0.09% (w/v) sodium azide and 2% sucrose. <i>Note that this product is shipped as lyophilized powder to China customers.</i>
Purification:	Affinity Purified
Conjugation:	Unconjugated
Storage:	Store at -20°C as received.
Stability:	Stable for 12 months from date of receipt.
Predicted Protein Size:	58 kDa
Gene Name:	zinc finger protein 157
Database Link:	NP_003437 Entrez Gene 7712 Human P51786



[View online »](#)

Background:

ZNF157 belongs to the krueppel C2H2-type zinc-finger protein family. It contains 12 C2H2-type zinc fingers and 1 KRAB domain. ZNF157 may be involved in transcriptional regulation. This gene product is a likely zinc finger family transcription factor. It contains KRAB-A and KRAB-B domains that act as transcriptional repressors in related proteins, and multiple zinc finger DNA binding motifs and finger linking regions characteristic of the Kruppel family. This gene is part of a gene cluster on chromosome Xp11.23. PRIMARYREFSEQ_SPAN PRIMARY_IDENTIFIER PRIMARY_SPAN COMP 1-28 U28687.1 19-46 29-1620 BC075003.2 1-1592 1621-1695 CO245585.1 27-101 c

Synonyms:

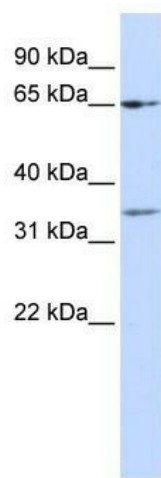
HZF22

Note:

Immunogen Sequence Homology: Human: 100%; Horse: 93%; Pig: 86%

Protein Families:

Transcription Factors

Product images:

WB Suggested Anti-ZNF157 Antibody Titration:
0.2-1 ug/ml; ELISA Titer: 1: 312500; Positive
Control: MCF7 cell lysate