

Product datasheet for **TA343401**

ZNF141 Rabbit Polyclonal Antibody

Product data:

Product Type:	Primary Antibodies
Applications:	WB
Recommended Dilution:	WB
Reactivity:	Human
Host:	Rabbit
Isotype:	IgG
Clonality:	Polyclonal
Immunogen:	The immunogen for anti-ZNF141 antibody: synthetic peptide directed towards the middle region of human ZNF141. Synthetic peptide located within the following region: KCKECKDAFKQFSLLSQHKKIHTVDKPYKCKDCDKAFKRFSHLNKHKKIH
Formulation:	Liquid. Purified antibody supplied in 1x PBS buffer with 0.09% (w/v) sodium azide and 2% sucrose.
Purification:	Affinity Purified
Conjugation:	Unconjugated
Storage:	Store at -20°C as received.
Stability:	Stable for 12 months from date of receipt.
Predicted Protein Size:	55 kDa
Gene Name:	zinc finger protein 141
Database Link:	NP_003432 Entrez Gene 7700 Human Q15928



[View online »](#)

Background:

Zinc finger encoding genes would be good candidates for being involved in the multiple developmental defects associated with chromosomal aneusomy--because of their role as transcriptional regulators, their abundance in the genome and their known association with specific developmental disorders. A zinc finger encoding cDNA (ZNF141) of the C2-H2/KRAB subfamily has been mapped to the 4p- (Wolf-Hirschhorn) syndrome (WHS) chromosome region. ZNF141 was expressed ubiquitously at low levels in the analysed tissue. The identification of a candidate gene for a chromosomal aneusomy syndrome belonging to a class of evolutionary conserved genes will provide options for studying its normal and abnormal expression during mammalian embryogenesis.

Synonyms:

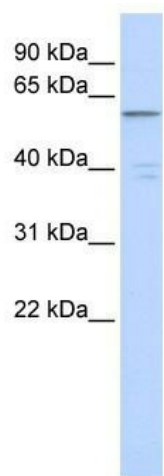
D4S90; PAPA6; pHZ-44

Note:

Immunogen Sequence Homology: Human: 100%; Zebrafish: 77%

Protein Families:

Transcription Factors

Product images:

WB Suggested Anti-ZNF141 Antibody Titration:
0.2-1 ug/ml; ELISA Titer: 1: 312500; Positive
Control: Human Placenta