

Product datasheet for **TA343398**

ZNF8 Rabbit Polyclonal Antibody

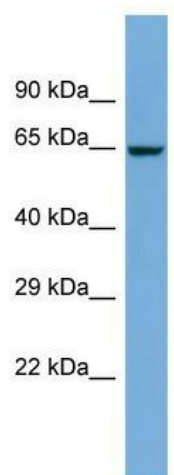
Product data:

Product Type:	Primary Antibodies
Applications:	WB
Recommended Dilution:	WB
Reactivity:	Human
Host:	Rabbit
Isotype:	IgG
Clonality:	Polyclonal
Immunogen:	The immunogen for Anti-ZNF8 antibody is: synthetic peptide directed towards the N-terminal region of Human ZNF8. Synthetic peptide located within the following region: AVDFTQEEWGQLDPTQRILYRDVMLETFGHLLSIGPELPKPEVISQLEQG
Formulation:	Liquid. Purified antibody supplied in 1x PBS buffer with 0.09% (w/v) sodium azide and 2% sucrose. <i>Note that this product is shipped as lyophilized powder to China customers.</i>
Purification:	Affinity Purified
Conjugation:	Unconjugated
Storage:	Store at -20°C as received.
Stability:	Stable for 12 months from date of receipt.
Predicted Protein Size:	63 kDa
Gene Name:	zinc finger protein 8
Database Link:	NP_066575 Entrez Gene 7554 Human P17098
Background:	ZNF8 may be involved in transcriptional regulation.
Synonyms:	HF.18; Zfp128
Note:	Immunogen Sequence Homology: Human: 100%; Dog: 92%; Pig: 92%; Horse: 92%; Bovine: 92%; Rat: 85%; Mouse: 85%; Rabbit: 83%



[View online »](#)

Product images:



Host: Rabbit; Target Name: ZNF8; Sample Tissue: COLO205 Whole Cell lysates; Antibody Dilution: 1.0 ug/ml