

Product datasheet for **TA343397**

ZNF133 Rabbit Polyclonal Antibody

Product data:

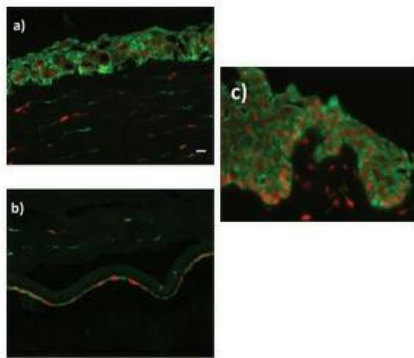
Product Type:	Primary Antibodies
Applications:	IF, WB
Recommended Dilution:	WB, IF
Reactivity:	Human, Mouse
Host:	Rabbit
Isotype:	IgG
Clonality:	Polyclonal
Immunogen:	The immunogen for anti-ZNF133 antibody: synthetic peptide directed towards the middle region of human ZNF133. Synthetic peptide located within the following region: KPYVCKTCGRGFSKSHLSRHRKTTSVHHRLPVQPDPEPCAGQPSDSLYS
Formulation:	Liquid. Purified antibody supplied in 1x PBS buffer with 0.09% (w/v) sodium azide and 2% sucrose. <i>Note that this product is shipped as lyophilized powder to China customers.</i>
Purification:	Affinity Purified
Conjugation:	Unconjugated
Storage:	Store at -20°C as received.
Stability:	Stable for 12 months from date of receipt.
Predicted Protein Size:	73 kDa
Gene Name:	zinc finger protein 133
Database Link:	NP_003425 Entrez Gene 7692 Human P52736
Background:	ZNF193 belongs to the krueppel C2H2-type zinc-finger protein family. It contains 5 C2H2-type zinc fingers and 1 SCAN box domain. ZNF193 may be involved in transcriptional regulation.
Synonyms:	pHZ-13; pHZ-66; ZNF150
Note:	Immunogen Sequence Homology: Human: 100%; Pig: 77%; Rabbit: 77%
Protein Families:	Transcription Factors



[View online »](#)

Product images:

WB Suggested Anti-ZNF133 Antibody Titration:
0.2-1 ug/ml; ELISA Titer: 1: 312500; Positive
Control: THP-1 cell lysate

**Legend**

- a) corneal epithelium
- b) corneal endothelium
- c) limbus

Three cryosections on each slide were stained with a single antibody. The fourth slice was used as a negative control (primary antibody omitted). The tissue was fixed with cold acetone for 10 minutes, rinsed in phosphate buffered saline (PBS) and incubate