

## Product datasheet for **TA343395**

### ZNF586 Rabbit Polyclonal Antibody

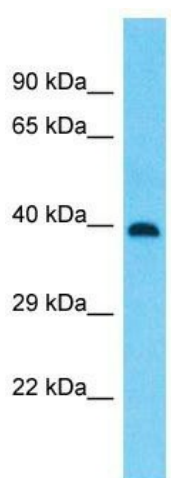
#### Product data:

Product Type:	Primary Antibodies
Applications:	WB
Recommended Dilution:	WB
Reactivity:	Human
Host:	Rabbit
Isotype:	IgG
Clonality:	Polyclonal
Immunogen:	The immunogen for Anti-ZNF586 antibody is: synthetic peptide directed towards the middle region of Human ZNF586. Synthetic peptide located within the following region: SSSLLQHQRVHTRERPYECSECGKSFSLRSNLIHHQRVHTGERHECGQCG
Formulation:	Liquid. Purified antibody supplied in 1x PBS buffer with 0.09% (w/v) sodium azide and 2% sucrose.
Purification:	Affinity Purified
Conjugation:	Unconjugated
Storage:	Store at -20°C as received.
Stability:	Stable for 12 months from date of receipt.
Predicted Protein Size:	39 kDa
Gene Name:	zinc finger protein 586
Database Link:	<a href="#">NP_060122</a> <a href="#">Entrez Gene 54807 Human</a> <a href="#">Q9NXT0</a>
Background:	ZNF586 may be involved in transcriptional regulation.
Synonyms:	FLJ20070
Note:	Immunogen Sequence Homology: Human: 100%; Dog: 93%; Horse: 92%; Pig: 86%; Bovine: 86%; Rabbit: 79%; Rat: 77%; Mouse: 77%
Protein Families:	Transcription Factors



[View online »](#)

## Product images:



Host: Rabbit

Target Name: ZNF586

Sample Tissue: Thymus Tumor Lysate

Antibody Dilution: 1.0 $\mu$ g/ml

Host: Rabbit; Target Name: ZNF586; Sample  
Tissue: Thymus Tumor lysates; Antibody Dilution:  
1.0 ug/ml