

Product datasheet for **TA343390**

Myeloid zinc finger 1 (MZF1) Rabbit Polyclonal Antibody

Product data:

Product Type:	Primary Antibodies
Applications:	WB
Recommended Dilution:	WB
Reactivity:	Human
Host:	Rabbit
Isotype:	IgG
Clonality:	Polyclonal
Immunogen:	The immunogen for anti-MZF1 antibody: synthetic peptide directed towards the N terminal of human MZF1. Synthetic peptide located within the following region: RPAVLGSPDRAPPEDEGPVMVKLEDSEEEGEAALWDPGPEAARLRFRCFR
Formulation:	Liquid. Purified antibody supplied in 1x PBS buffer with 0.09% (w/v) sodium azide and 2% sucrose. <i>Note that this product is shipped as lyophilized powder to China customers.</i>
Purification:	Affinity Purified
Conjugation:	Unconjugated
Storage:	Store at -20°C as received.
Stability:	Stable for 12 months from date of receipt.
Predicted Protein Size:	82 kDa
Gene Name:	myeloid zinc finger 1
Database Link:	NP_003413 Entrez Gene 7593 Human P28698
Background:	MZF1 belongs to the krueppel C2H2-type zinc-finger protein family. It contains 13 C2H2-type zinc fingers and 1 SCAN box domain. MZF1 may be one regulator of transcriptional events during hemopoietic development.
Synonyms:	MZF-1; MZF1B; ZFP98; ZNF42; ZSCAN6
Note:	Immunogen Sequence Homology: Dog: 100%; Human: 100%; Horse: 92%



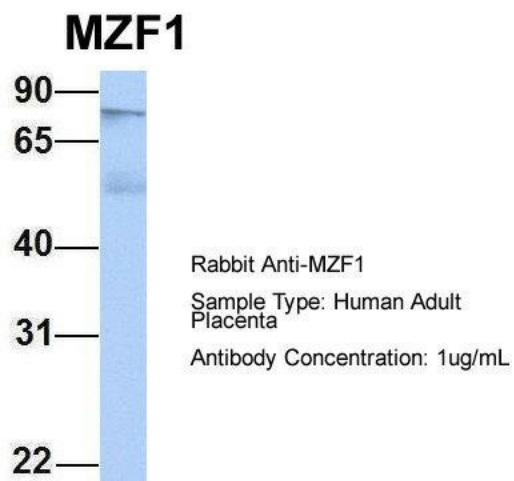
[View online »](#)

Protein Families: Transcription Factors

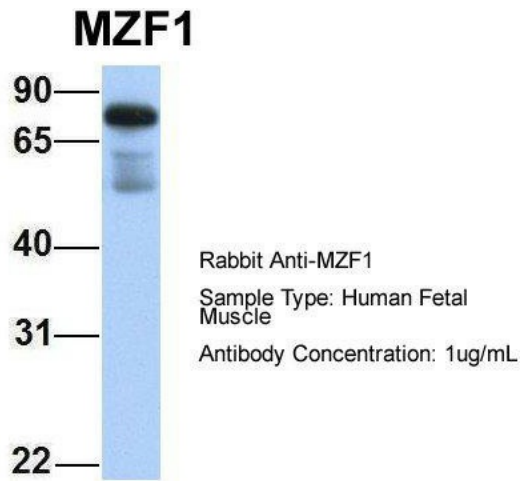
Product images:



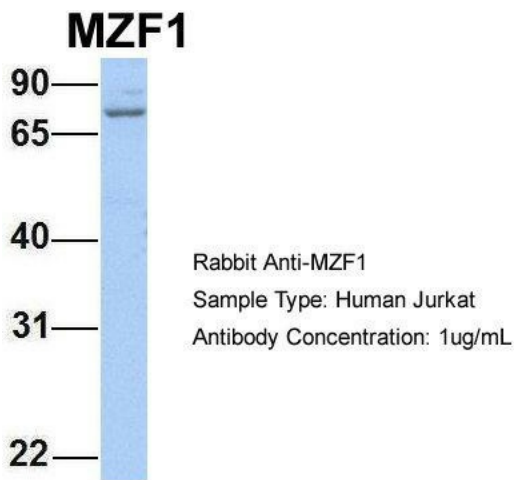
WB Suggested Anti-MZF1 Antibody Titration: 0.2-1 ug/ml; ELISA Titer: 1: 312500; Positive Control: Human brain



Host: Rabbit; Target Name: MZF1; Sample Tissue: Human Adult Placenta; Antibody Dilution: 1.0 ug/ml



Host: Rabbit; Target Name: MZF1; Sample Tissue: Human Fetal Muscle; Antibody Dilution: 1.0 ug/ml



Host: Rabbit; Target Name: MZF1; Sample Tissue: Jurkat; Antibody Dilution: 1.0 ug/ml; MZF1 is supported by BioGPS gene expression data to be expressed in Jurkat