

Product datasheet for **TA343387**

ZFY Rabbit Polyclonal Antibody

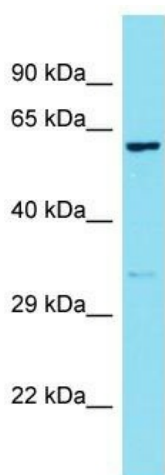
Product data:

Product Type:	Primary Antibodies
Applications:	WB
Recommended Dilution:	WB
Reactivity:	Human
Host:	Rabbit
Isotype:	IgG
Clonality:	Polyclonal
Immunogen:	The immunogen for Anti-ZFX antibody is: synthetic peptide directed towards the C-terminal region of Human ZFX. Synthetic peptide located within the following region: QCEYCEYSTTDASGFKRHVISIHTKDYPHRCEYCKKGFRRPSEKNQHIMR
Formulation:	Liquid. Purified antibody supplied in 1x PBS buffer with 0.09% (w/v) sodium azide and 2% sucrose. <i>Note that this product is shipped as lyophilized powder to China customers.</i>
Purification:	Affinity Purified
Conjugation:	Unconjugated
Storage:	Store at -20°C as received.
Stability:	Stable for 12 months from date of receipt.
Predicted Protein Size:	63 kDa
Gene Name:	zinc finger protein, Y-linked
Database Link:	NP_003402 Entrez Gene 7544 Human P08048
Background:	ZFX is a probable transcriptional activator.
Synonyms:	ZNF911
Note:	Immunogen Sequence Homology: Dog: 100%; Pig: 100%; Rat: 100%; Horse: 100%; Human: 100%; Mouse: 100%; Bovine: 100%; Rabbit: 100%; Zebrafish: 100%; Guinea pig: 100%
Protein Families:	Transcription Factors



[View online »](#)

Product images:



Host: Rabbit

Target Name: ZFX

Sample Tissue: Stomach Tumor Lysate

Antibody Dilution: 1.0 μ g/ml

Host: Rabbit; Target Name: ZFY; Sample Tissue: Stomach Tumor lysates; Antibody Dilution: 1.0 ug/ml