

Product datasheet for **TA343386**

ZFY Rabbit Polyclonal Antibody

Product data:

Product Type:	Primary Antibodies
Applications:	WB
Recommended Dilution:	WB
Reactivity:	Human
Host:	Rabbit
Isotype:	IgG
Clonality:	Polyclonal
Immunogen:	The immunogen for anti-ZFY antibody: synthetic peptide directed towards the N terminal of human ZFY. Synthetic peptide located within the following region: MDEDEFELQPQEPNSFFDGIGADATHMDGDQIVVEIQEAVFVSNIVDSDI
Formulation:	Liquid. Purified antibody supplied in 1x PBS buffer with 0.09% (w/v) sodium azide and 2% sucrose. <i>Note that this product is shipped as lyophilized powder to China customers.</i>
Purification:	Affinity Purified
Conjugation:	Unconjugated
Storage:	Store at -20°C as received.
Stability:	Stable for 12 months from date of receipt.
Predicted Protein Size:	90 kDa
Gene Name:	zinc finger protein, Y-linked
Database Link:	NP_003402 Entrez Gene 7544 Human P08048



[View online »](#)

Background:

ZFY is a zinc finger-containing protein that may function as a transcription factor. ZFY was once a candidate gene for the testis-determining factor (TDF) and was erroneously referred to as TDF. This gene encodes a zinc finger-containing protein that may function as a transcription factor. This gene was once a candidate gene for the testis-determining factor (TDF) and was erroneously referred to as TDF. Publication Note: This RefSeq record includes a subset of the publications that are available for this gene. Please see the Entrez Gene record to access additional publications.

Synonyms:

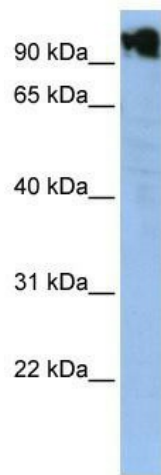
ZNF911

Note:

Immunogen Sequence Homology: Human: 100%; Bovine: 100%; Rat: 93%; Dog: 86%; Pig: 86%; Horse: 86%; Rabbit: 86%; Guinea pig: 86%

Protein Families:

Transcription Factors

Product images:

WB Suggested Anti-ZFX Antibody Titration: 0.2-1 ug/ml; ELISA Titer: 1: 1562500; Positive Control: HepG2 cell lysate