

Product datasheet for **TA343385**

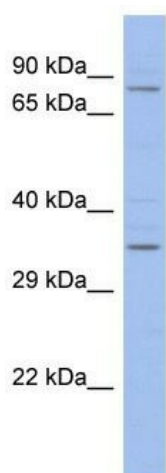
ZFX Rabbit Polyclonal Antibody

Product data:

Product Type:	Primary Antibodies
Applications:	WB
Recommended Dilution:	WB
Reactivity:	Human
Host:	Rabbit
Isotype:	IgG
Clonality:	Polyclonal
Immunogen:	The immunogen for Anti-ZFX antibody is: synthetic peptide directed towards the C-terminal region of Human ZFX. Synthetic peptide located within the following region: TTDASGFKRHVSIHTKDYPHRCEYCKKGFRRPSEKNQHIMRHHKEVGLP
Formulation:	Liquid. Purified antibody supplied in 1x PBS buffer with 0.09% (w/v) sodium azide and 2% sucrose. <i>Note that this product is shipped as lyophilized powder to China customers.</i>
Purification:	Affinity Purified
Conjugation:	Unconjugated
Storage:	Store at -20°C as received.
Stability:	Stable for 12 months from date of receipt.
Predicted Protein Size:	83 kDa
Gene Name:	zinc finger protein, X-linked
Database Link:	NP_003401 Entrez Gene 7543 Human P17010
Background:	The function of this protein remains unknown.
Synonyms:	ZNF926
Note:	Immunogen Sequence Homology: Dog: 100%; Pig: 100%; Rat: 100%; Horse: 100%; Human: 100%; Mouse: 100%; Bovine: 100%; Rabbit: 100%; Zebrafish: 100%; Guinea pig: 100%
Protein Families:	Transcription Factors



[View online »](#)

Product images:

Host: Rabbit
Target Name: ZFX
Sample Tissue: ACHN Cell Lysate
Antibody Dilution: 1.0 μ g/ml

Host: Rabbit; Target Name: ZFX; Sample Tissue: ACHN Whole cell lysates; Antibody Dilution: 1.0 ug/ml