

Product datasheet for **TA343384**

ZFX Rabbit Polyclonal Antibody

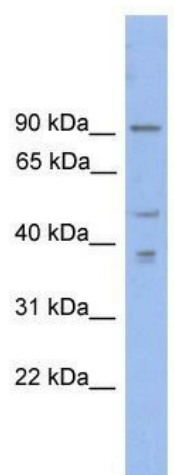
Product data:

Product Type:	Primary Antibodies
Applications:	WB
Recommended Dilution:	WB
Reactivity:	Human
Host:	Rabbit
Isotype:	IgG
Clonality:	Polyclonal
Immunogen:	The immunogen for anti-ZFX antibody: synthetic peptide directed towards the N terminal of human ZFX. Synthetic peptide located within the following region: MDEDGLELQQEPNSFFDATGADGTHMDGDQIVVEVQETVFSVDVSDSDIT
Formulation:	Liquid. Purified antibody supplied in 1x PBS buffer with 0.09% (w/v) sodium azide and 2% sucrose. <i>Note that this product is shipped as lyophilized powder to China customers.</i>
Purification:	Affinity Purified
Conjugation:	Unconjugated
Storage:	Store at -20°C as received.
Stability:	Stable for 12 months from date of receipt.
Predicted Protein Size:	90 kDa
Gene Name:	zinc finger protein, X-linked
Database Link:	NP_003401 Entrez Gene 7543 Human P17010
Background:	ZFX is a probable transcriptional activator.
Synonyms:	ZNF926
Note:	Immunogen Sequence Homology: Human: 100%; Dog: 93%; Pig: 93%; Horse: 93%; Bovine: 93%; Rabbit: 93%; Guinea pig: 93%; Rat: 87%; Mouse: 87%
Protein Families:	Transcription Factors



[View online »](#)

Product images:



WB Suggested Anti-ZFX Antibody Titration: 0.2-1 ug/ml; Positive Control: THP-1 cell lysate