

Product datasheet for **TA343381**

TULP2 Rabbit Polyclonal Antibody

Product data:

Product Type:	Primary Antibodies
Applications:	IHC, WB
Recommended Dilution:	WB, IHC
Reactivity:	Human
Host:	Rabbit
Isotype:	IgG
Clonality:	Polyclonal
Immunogen:	The immunogen for anti-TULP2 antibody: synthetic peptide directed towards the N terminal of human TULP2. Synthetic peptide located within the following region: MSQDNDTLMRDILGHELAAMRLQKLEQQRRLEFKKQRQKRQELLMVQANP
Formulation:	Liquid. Purified antibody supplied in 1x PBS buffer with 0.09% (w/v) sodium azide and 2% sucrose.
Purification:	Affinity Purified
Conjugation:	Unconjugated
Storage:	Store at -20°C as received.
Stability:	Stable for 12 months from date of receipt.
Predicted Protein Size:	59 kDa
Gene Name:	tubby like protein 2
Database Link:	NP_003314 Entrez Gene 7288 Human O00295
Background:	TULP2 is a member of a family of tubby-like genes (TULPs) that encode proteins of unknown function. Members of this family have been identified in plants, vertebrates, and invertebrates. The TULP proteins share a conserved C-terminal region of approximately 200 amino acid residues. TULP2 is a member of a family of tubby-like genes (TULPs) that encode proteins of unknown function. Members of this family have been identified in plants, vertebrates, and invertebrates. The TULP proteins share a conserved C-terminal region of approximately 200 amino acid residues.



[View online »](#)

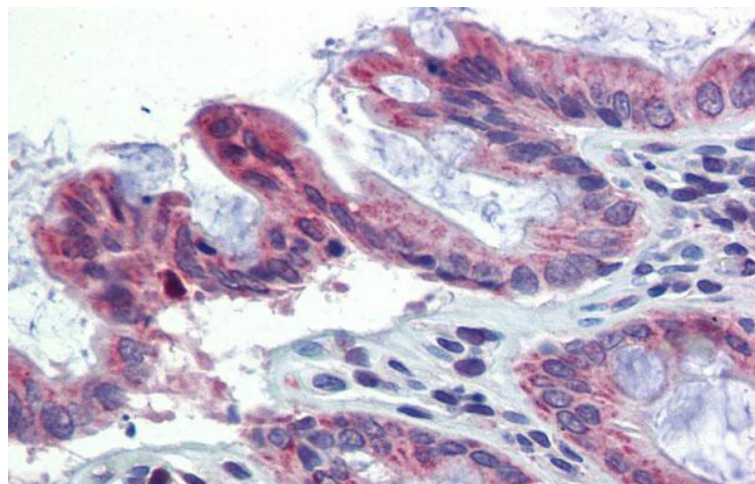
Synonyms: CT65; TUBL2

Note: Immunogen Sequence Homology: Human: 100%; Horse: 93%; Rat: 86%; Mouse: 86%; Bovine: 86%; Dog: 79%; Pig: 79%; Guinea pig: 79%

Product images:



WB Suggested Anti-TULP2 Antibody Titration: 0.2-1 ug/ml; ELISA Titer: 1: 1562500; Positive Control: Hela cell lysate



Immunohistochemistry with Human Colon lysate tissue at an antibody concentration of 5.0 ug/ml using anti-TULP2 antibody