

Product datasheet for **TA343370**

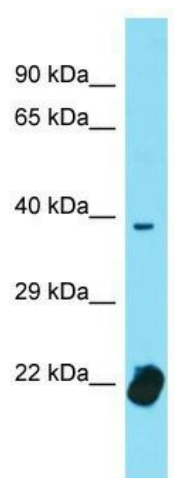
TCF12 Rabbit Polyclonal Antibody

Product data:

Product Type:	Primary Antibodies
Applications:	WB
Recommended Dilution:	WB
Reactivity:	Human
Host:	Rabbit
Isotype:	IgG
Clonality:	Polyclonal
Immunogen:	The immunogen for Anti-TCF12 antibody is: synthetic peptide directed towards the C-terminal region of Human TCF12. Synthetic peptide located within the following region: AVILSLEQQVRERNLNPKAACLKRREEEKVSAVSAEPPTTLPGTHPGLSE
Formulation:	Liquid. Purified antibody supplied in 1x PBS buffer with 0.09% (w/v) sodium azide and 2% sucrose. <i>Note that this product is shipped as lyophilized powder to China customers.</i>
Purification:	Affinity Purified
Conjugation:	Unconjugated
Storage:	Store at -20°C as received.
Stability:	Stable for 12 months from date of receipt.
Predicted Protein Size:	37 kDa
Gene Name:	transcription factor 12
Database Link:	NP_003196 Entrez Gene 6938 Human Q99081
Background:	The function of this protein remains unknown.
Synonyms:	bHLHb20; CRS3; HEB; HsT17266; HTF4
Note:	Immunogen Sequence Homology: Dog: 100%; Pig: 100%; Rat: 100%; Horse: 100%; Human: 100%; Mouse: 100%; Bovine: 100%; Rabbit: 100%; Zebrafish: 100%; Guinea pig: 100%
Protein Families:	Druggable Genome, Transcription Factors



[View online »](#)

Product images:

Host: Rabbit; Target Name: TCF12; Sample
Tissue: Uterus Tumor lysates; Antibody Dilution:
1.0 ug/ml