

Product datasheet for **TA343367**

TCF3 / E2A (TCF3) Rabbit Polyclonal Antibody

Product data:

Product Type:	Primary Antibodies
Applications:	WB
Recommended Dilution:	WB
Reactivity:	Human
Host:	Rabbit
Isotype:	IgG
Clonality:	Polyclonal
Immunogen:	The immunogen for anti-TCF3 antibody: synthetic peptide directed towards the N terminal of human TCF3. Synthetic peptide located within the following region: MNQPQRMAPVGTDKELSDLLDFSMFPLPVTNGKGRPASLAGAQFGGSGL
Formulation:	Liquid. Purified antibody supplied in 1x PBS buffer with 0.09% (w/v) sodium azide and 2% sucrose. <i>Note that this product is shipped as lyophilized powder to China customers.</i>
Purification:	Protein A purified
Conjugation:	Unconjugated
Storage:	Store at -20°C as received.
Stability:	Stable for 12 months from date of receipt.
Predicted Protein Size:	68 kDa
Gene Name:	transcription factor 3
Database Link:	NP_003191 Entrez Gene 6929 Human P15923
Background:	TCF3 contains 1 basic helix-loop-helix (bHLH) domain. Heterodimers between TCF3 and tissue-specific basic helix-loop-helix (bHLH) proteins play major roles in determining tissue-specific cell fate during embryogenesis, like muscle or early B-cell differentiation. Dimers bind DNA on E-box motifs: 5'-CANNTG-3'. TCF3 binds to the kappa-E2 site in the kappa immunoglobulin gene enhancer.
Synonyms:	AGM8; bHLHb21; E2A; E47; ITF1; TCF-3; VDIR

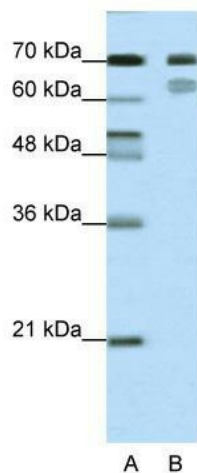


[View online »](#)

Note: Immunogen Sequence Homology: Dog: 100%; Pig: 100%; Rat: 100%; Horse: 100%; Human: 100%; Bovine: 93%; Guinea pig: 92%; Mouse: 86%; Rabbit: 77%

Protein Families: Druggable Genome, ES Cell Differentiation/IPS, Induced pluripotent stem cells, Transcription Factors

Product images:



WB Suggested Anti-TCF3 Antibody Titration: 0.31 ug/ml; ELISA Titer: 1: 1562500; Positive Control: HepG2 cell lysate; TCF3 is strongly supported by BioGPS gene expression data to be expressed in Human HepG2 cells