

Product datasheet for **TA343365**

Spt6 (SUPT6H) Rabbit Polyclonal Antibody

Product data:

Product Type:	Primary Antibodies
Applications:	IHC, WB
Recommended Dilution:	WB
Reactivity:	Human
Host:	Rabbit
Isotype:	IgG
Clonality:	Polyclonal
Immunogen:	The immunogen for anti-SUPT6H antibody: synthetic peptide directed towards the N terminal of human SUPT6H. Synthetic peptide located within the following region: EAESEEEYNDGEVPRVTKKFVEEEDDDEEEEEENLDDQDEQGNLKG
Formulation:	Liquid. Purified antibody supplied in 1x PBS buffer with 0.09% (w/v) sodium azide and 2% sucrose.
Purification:	Affinity Purified
Conjugation:	Unconjugated
Storage:	Store at -20°C as received.
Stability:	Stable for 12 months from date of receipt.
Predicted Protein Size:	199 kDa
Gene Name:	SPT6 homolog, histone chaperone
Database Link:	NP_003161 Entrez Gene 6830 Human Q7KZ85
Background:	SUPT6H may be functionally analogous to SPT6 and emb-5 and may therefore regulate transcription through establishment or maintenance of chromatin structure. Spt6 may also participates in the regulation of transcription by RNA polymerase II (RNAPII). Human Spt6 (hSpt6) is a classic transcription elongation factor that enhances the rate of RNAPII elongation. HSpt6 is capable of stimulating transcription elongation both individually and in concert with DRB sensitivity-inducing factor (DSIF).
Synonyms:	emb-5; SPT6; SPT6H

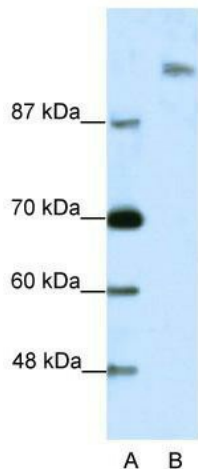


[View online »](#)

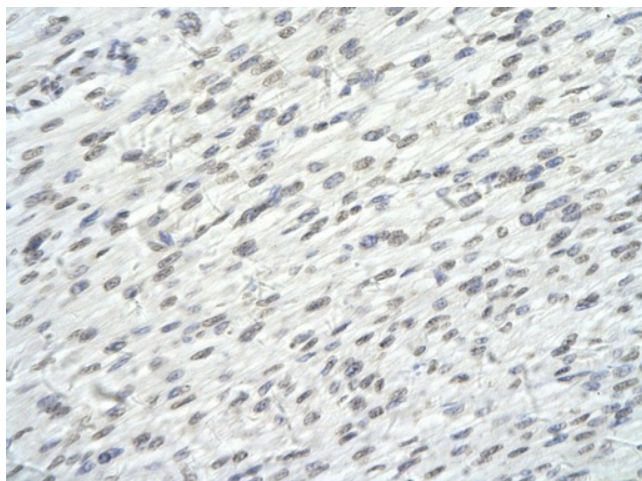
Note: Immunogen Sequence Homology: Dog: 100%; Pig: 100%; Rat: 100%; Horse: 100%; Human: 100%; Bovine: 100%; Rabbit: 100%; Guinea pig: 100%; Mouse: 93%; Yeast: 77%; Zebrafish: 77%

Protein Families: Transcription Factors

Product images:



WB Suggested Anti-SUPT6H Antibody Titration: 2.5 ug/ml; ELISA Titer: 1: 62500; Positive Control: Jurkat cell lysate; SUPT6H is strongly supported by BioGPS gene expression data to be expressed in Human Jurkat cells



Rabbit Anti-SUPT6H antibody; Paraffin Embedded Tissue: Human Heart cell; Cellular Data: Epithelial cells of renal tubule; Antibody Concentration: 4.0-8.0 ug/ml; Magnification: 400X