

Product datasheet for TA343361

GGA2 Rabbit Polyclonal Antibody

Product data:

Product Type:	Primary Antibodies
Applications:	WB
Recommended Dilution:	WB
Reactivity:	Human
Host:	Rabbit
Isotype:	IgG
Clonality:	Polyclonal
Immunogen:	The immunogen for anti-GGA2 antibody is: synthetic peptide directed towards the N-terminal region of Human GGA2. Synthetic peptide located within the following region: MLKKQGIKQDPKLPVDKILPPPSPWPKSSIFDADEEKSKLLTRLLKSNH
Formulation:	Liquid. Purified antibody supplied in 1x PBS buffer with 0.09% (w/v) sodium azide and 2% sucrose. <i>Note that this product is shipped as lyophilized powder to China customers.</i>
Conjugation:	Unconjugated
Storage:	Store at -20°C as received.
Stability:	Stable for 12 months from date of receipt.
Predicted Protein Size:	67 kDa
Gene Name:	golgi associated, gamma adaptin ear containing, ARF binding protein 2
Database Link:	NP_055859 Entrez Gene 23062 Human Q9UJY4
Background:	This gene encodes a member of the Golgi-localized, gamma adaptin ear-containing, ARF-binding (GGA) family. This family includes ubiquitous coat proteins that regulate the trafficking of proteins between the trans-Golgi network and the lysosome. These proteins share an amino-terminal VHS domain which mediates sorting of the mannose 6-phosphate receptors at the trans-Golgi network. They also contain a carboxy-terminal region with homology to the ear domain of gamma-adaptins. This family member may play a significant role in cargo molecules regulation and clathrin-coated vesicle assembly.



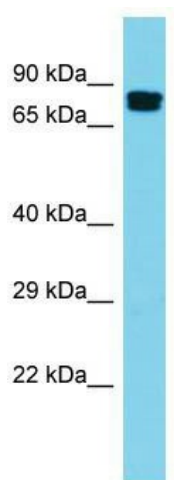
[View online »](#)

Synonyms: VEAR

Note: Immunogen Sequence Homology: Dog: 100%; Pig: 100%; Rat: 100%; Horse: 100%; Human: 100%; Mouse: 100%; Bovine: 100%; Guinea pig: 100%; Rabbit: 93%

Protein Pathways: Lysosome

Product images:



Host: Rabbit; Target Name: GGA2; Sample Tissue: Placenta lysates; Antibody Dilution: 1.0 ug/ml