

## Product datasheet for **TA343360**

### SMC6L1 (SMC6) Rabbit Polyclonal Antibody

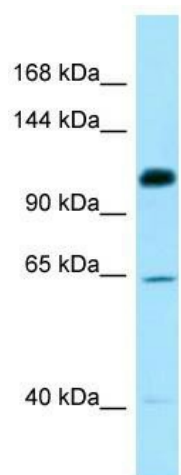
#### Product data:

Product Type:	Primary Antibodies
Applications:	WB
Recommended Dilution:	WB
Reactivity:	Human
Host:	Rabbit
Isotype:	IgG
Clonality:	Polyclonal
Immunogen:	The immunogen for anti-SMC6 antibody is: synthetic peptide directed towards the C-terminal region of Human SMC6. Synthetic peptide located within the following region: MADSQRFRQFILLTPQSMSSLPSSKLIRILRMSDPERGQTTLPRPVTQE
Formulation:	Liquid. Purified antibody supplied in 1x PBS buffer with 0.09% (w/v) sodium azide and 2% sucrose. <i>Note that this product is shipped as lyophilized powder to China customers.</i>
Conjugation:	Unconjugated
Storage:	Store at -20°C as received.
Stability:	Stable for 12 months from date of receipt.
Predicted Protein Size:	126 kDa
Gene Name:	structural maintenance of chromosomes 6
Database Link:	<a href="#">NP_078900</a> <a href="#">Entrez Gene 79677 Human Q96SB8</a>
Background:	SMC6 is a core component of the SMC5-SMC6 complex, a complex involved in DNA double-strand breaks by homologous recombination. The complex may promote sister chromatid homologous recombination by recruiting the SMC1-SMC3 cohesin complex to double-strand breaks.
Synonyms:	hSMC6; SMC-6; SMC6L1
Note:	Immunogen Sequence Homology: Dog: 100%; Pig: 100%; Rat: 100%; Human: 100%; Mouse: 100%; Yeast: 100%; Bovine: 100%; Rabbit: 100%; Guinea pig: 100%; Horse: 93%



[View online »](#)

## Product images:



WB Suggested Anti-SMC6 Antibody; Titration: 1.0 ug/ml; Positive Control: MCF7 Whole Cell SMC6 is supported by BioGPS gene expression data to be expressed in MCF7