

Product datasheet for **TA343356**

Sialidase 3 (NEU3) Rabbit Polyclonal Antibody

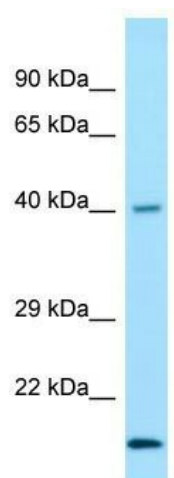
Product data:

Product Type:	Primary Antibodies
Applications:	WB
Recommended Dilution:	WB
Reactivity:	Human
Host:	Rabbit
Isotype:	IgG
Clonality:	Polyclonal
Immunogen:	The immunogen for anti-NEU3 antibody is: synthetic peptide directed towards the C-terminal region of Human NEU3. Synthetic peptide located within the following region: EEEGLFGCLFECGTKQECEQIAFRLFTHREILSHLQGDCTSPGRNPSQFK
Formulation:	Liquid. Purified antibody supplied in 1x PBS buffer with 0.09% (w/v) sodium azide and 2% sucrose. <i>Note that this product is shipped as lyophilized powder to China customers.</i>
Purification:	Affinity Purified
Conjugation:	Unconjugated
Storage:	Store at -20°C as received.
Stability:	Stable for 12 months from date of receipt.
Predicted Protein Size:	38 kDa
Gene Name:	neuraminidase 3 (membrane sialidase)
Database Link:	NP_006647 Entrez Gene 10825 Human Q9UQ49
Background:	The function of this protein remains unknown.
Synonyms:	SIAL3
Note:	Immunogen Sequence Homology: Horse: 100%; Human: 100%
Protein Pathways:	Other glycan degradation, Sphingolipid metabolism



[View online »](#)

Product images:



Host: Rabbit; Target Name: NEU3; Sample Tissue: THP-1 Whole Cell lysates; Antibody Dilution: 1.0 ug/ml