

## Product datasheet for **TA343354**

### ICOS Ligand (ICOSLG) Rabbit Polyclonal Antibody

#### Product data:

Product Type:	Primary Antibodies
Applications:	WB
Recommended Dilution:	WB
Reactivity:	Human
Host:	Rabbit
Isotype:	IgG
Clonality:	Polyclonal
Immunogen:	The immunogen for anti-ICOSLG antibody is: synthetic peptide directed towards the N-terminal region of Human ICOSLG. Synthetic peptide located within the following region: VDSRYRNRALMSPAGMLRGDFSLRLFNVTPQDEQKFHCLVLSQSLGFQEV
Formulation:	Liquid. Purified antibody supplied in 1x PBS buffer with 0.09% (w/v) sodium azide and 2% sucrose. <i>Note that this product is shipped as lyophilized powder to China customers.</i>
Conjugation:	Unconjugated
Storage:	Store at -20°C as received.
Stability:	Stable for 12 months from date of receipt.
Predicted Protein Size:	33 kDa
Gene Name:	inducible T-cell costimulator ligand
Database Link:	<a href="#">NP_056074</a> <a href="#">Entrez Gene 23308 Human O75144</a>
Background:	ICOSLG is a ligand for the T-cell-specific cell surface receptor ICOS. ICOSLG acts as a costimulatory signal for T-cell proliferation and cytokine secretion; induces also B-cell proliferation and differentiation into plasma cells. ICOSLG could play an important role in mediating local tissue responses to inflammatory conditions, as well as in modulating the secondary immune response by co-stimulating memory T-cell function.
Synonyms:	B7-H2; B7H2; B7RP-1; B7RP1; CD275; GL50; ICOS-L; ICOSL; LICOS



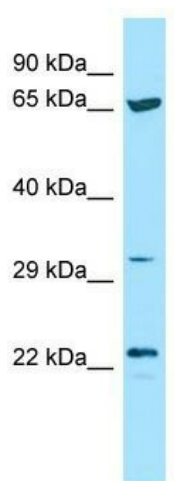
[View online »](#)

**Note:** Immunogen Sequence Homology: Human: 100%; Pig: 92%; Bovine: 92%; Horse: 85%; Guinea pig

**Protein Families:** Transmembrane

**Protein Pathways:** Cell adhesion molecules (CAMs)

**Product images:**



WB Suggested Anti-ICOSLG Antibody; Titration: 1.0 ug/ml; Positive Control: ACHN Whole Cell