

## Product datasheet for **TA343348**

### Gastric Inhibitory Polypeptide Receptor (GIPR) Rabbit Polyclonal Antibody

#### Product data:

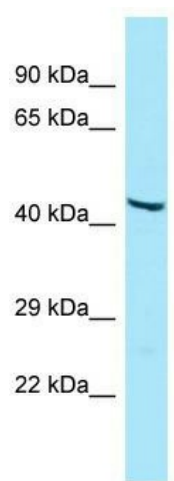
Product Type:	Primary Antibodies
Applications:	WB
Recommended Dilution:	WB
Reactivity:	Human
Host:	Rabbit
Isotype:	IgG
Clonality:	Polyclonal
Immunogen:	The immunogen for anti-GIPR antibody is: synthetic peptide directed towards the N-terminal region of Human GIPR. Synthetic peptide located within the following region: LRLSLCGLLLQRAETGSKGQTAGELYQRWERYRRECQETLAAAEPPSVAA
Formulation:	Liquid. Purified antibody supplied in 1x PBS buffer with 0.09% (w/v) sodium azide and 2% sucrose. <i>Note that this product is shipped as lyophilized powder to China customers.</i>
Purification:	Affinity Purified
Conjugation:	Unconjugated
Storage:	Store at -20°C as received.
Stability:	Stable for 12 months from date of receipt.
Predicted Protein Size:	47 kDa
Gene Name:	gastric inhibitory polypeptide receptor
Database Link:	<a href="#">NP_000155</a> <a href="#">Entrez Gene 2696 Human P48546</a>
Background:	The function of this protein remains unknown.
Synonyms:	PGQTL2
Note:	Immunogen Sequence Homology: Dog: 100%; Pig: 100%; Rat: 100%; Human: 100%; Bovine: 100%; Horse: 93%; Rabbit: 93%; Guinea pig: 92%
Protein Families:	Druggable Genome, GPCR, Transmembrane



[View online »](#)

Protein Pathways: Neuroactive ligand-receptor interaction

### Product images:



Host: Rabbit; Target Name: GIPR; Sample Tissue: HT1080 Whole Cell lysates; Antibody Dilution: 1.0 ug/ml