

Product datasheet for **TA343347**

ROR1 Rabbit Polyclonal Antibody

Product data:

Product Type:	Primary Antibodies
Applications:	WB
Recommended Dilution:	WB
Reactivity:	Human
Host:	Rabbit
Isotype:	IgG
Clonality:	Polyclonal
Immunogen:	The immunogen for anti-ROR1 antibody is: synthetic peptide directed towards the C-terminal region of Human ROR1. Synthetic peptide located within the following region: PTGPPRVIQHCPPPKSRSPSSASGSTSTGHVTSLPSSGSNQEANIPLLPH
Formulation:	Liquid. Purified antibody supplied in 1x PBS buffer with 0.09% (w/v) sodium azide and 2% sucrose. <i>Note that this product is shipped as lyophilized powder to China customers.</i>
Purification:	Affinity Purified
Conjugation:	Unconjugated
Storage:	Store at -20°C as received.
Stability:	Stable for 12 months from date of receipt.
Predicted Protein Size:	104 kDa
Gene Name:	receptor tyrosine kinase-like orphan receptor 1
Database Link:	NP_005003 Entrez Gene 4919 Human Q01973
Background:	The protein encoded by this gene is a receptor protein tyrosine kinase that modulates neurite growth in the central nervous system. It is a type I membrane protein and belongs to the ROR subfamily of cell surface receptors. Alternative splicing results in multiple transcript variants encoding different isoforms.
Synonyms:	dj537F10.1; NTRKR1

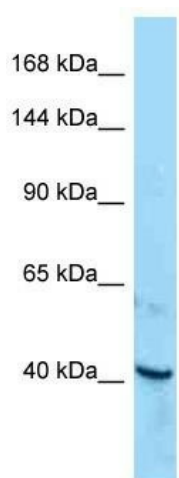


[View online »](#)

Note: Immunogen Sequence Homology: Dog: 100%; Pig: 100%; Rat: 100%; Horse: 100%; Human: 100%; Mouse: 100%; Bovine: 100%; Rabbit: 100%; Zebrafish: 100%; Guinea pig: 100%

Protein Families: Druggable Genome, Protein Kinase, Transmembrane

Product images:



Host: Rabbit; Target Name: ROR1; Sample Tissue: HepG2 Whole Cell lysates; Antibody Dilution: 1.0 ug/ml